

LIVESTOCK

2022/23



MEET THE TEAM



Emma Gatehouse
Livestock Product Manager
07966 664096



David Pryce
Animal Health Sales
01584 872134
07970 271299



Stuart Davies
Animal Health Sales
07870 898422



Ollie James
Animal Health Sales
07970 240164



Paul Glasper
Animal Health Sales
07594 089755



David Thornton
Feed and Nutrition Specialist
07776 663490



Ben Lowe
National Forage Product Manager
07966 533374



Rob Bowes
RHIZA Account Manager and Agronomist
07825 918098

THE AGRII LIVESTOCK OFFERING



The Agrii Livestock Team is made up of highly qualified and dedicated advisory staff.

Our staff provide a professional, advice based service in addition to supplying the following products.

- + Vaccines for beef, sheep, suckler cow and dairy enterprises
- + External and internal parasite control products for all farm animals
- + Trace element drenches and boluses for sheep and cattle
- + Superstock proteins for home mixing
- + Calf and lamb milk powders and follow on products
- + Protein and mineralised buckets and feed blocks
- + Compound feeds
- + Dairy and hygiene chemicals
- + Mobile livestock handling equipment
- + Cereal, grassland and forage crop seed
- + Silage preservation products
- + Cereal harvest preservation products
- + Farm plans
- + Worming programmes, including faecal egg counts

Agrii: for all your livestock needs.

CONTENTS

THE AGRII LIVESTOCK OFFERING	3	FORAGE & CROP NUTRITION	
ABOUT AGRII	4	Grass	16-17
LOGISTICS	4	Roots	18
GREEN HORIZONS	5	Forage crop nutrition	19
PROTECTION OF WATER RESOURCES	32	Horse paddocks	20
MORE RESOURCES	36	Equine mixtures	21
LIVESTOCK & FORAGE CALENDAR	38-39	Hay & haylage mixtures	22
CONTACTS	Back Cover	Maize	23-25
LIVESTOCK NUTRITION		ANCILLARY PRODUCTS	
Protein & home-mixing	6	Netwrap, film & twine	26-27
Compound feed & feed equipment	7	Fencing & wire	28
Vitamins & trace elements	8-9	Electric fencing	29
Calf & lamb rearing	10	Betacraft workwear	30
ANIMAL HEALTH		TANKS	
Parasite control	12-13	Water Storage Tanks	31
Vaccine programmes	14	SUPPORT SERVICES	
Livestock hygiene	15	Consultancy services	33
		R&T Liming	34
		RHIZA	35
		Agrii Finance	37

THANK YOU TO OUR PARTNERS FOR THEIR SUPPORT IN THE CREATION OF THIS DOCUMENT



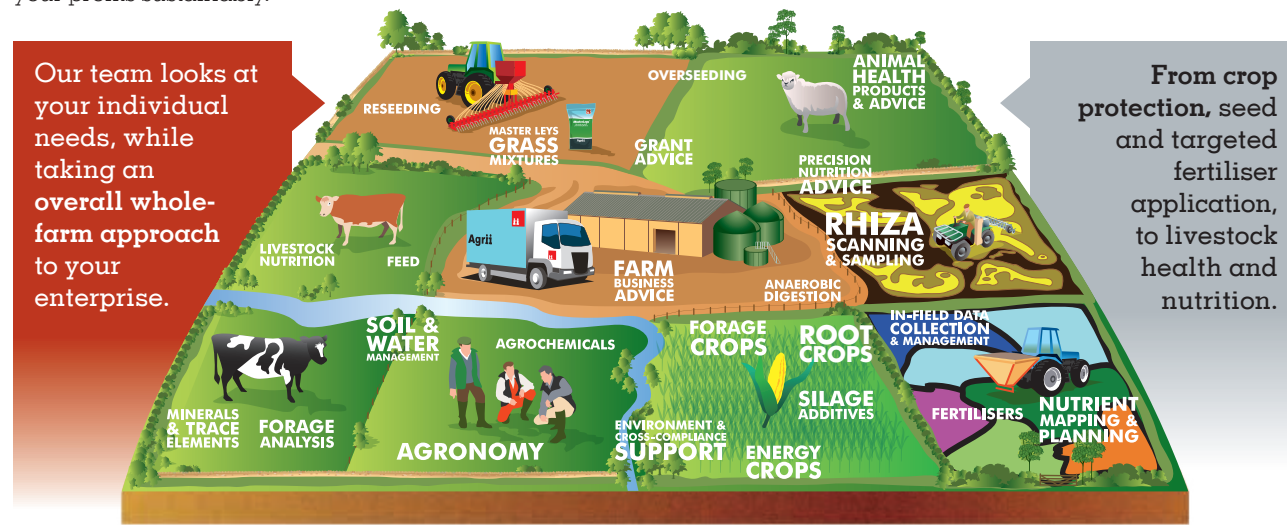
ABOUT AGRII

As a leading provider of agronomy services, technology and strategic advice, Agrii combines excellence and innovation with the latest research and development to ensure our customers can meet today's farming challenges with knowledge and confidence.

Adopting an integrated approach to managing your forage system can help to improve its performance, and consequently the productivity of your livestock.

Agrii specialists in nutrition, seed, forage, animal health, agronomy and precision work together, using the latest technologies in a joined up way – helping you to increase your profits sustainably.

All of this expertise is backed up by the latest research and most up-to-date agri-intelligence on grassland productivity, translated into practice on our local demonstration sites. We can provide the products, support and advice that you need across all areas of your mixed or livestock enterprises.



CLASS-LEADING LOGISTICS

With Agrii, your contact and our depot teams take the strain when it comes to organising your orders.

Direct from your Agrii contact's computer, to the depot, to the farm... using the latest supply chain systems to ensure the stress is taken out of ordering the products that you need.

Local and reliable

- ✦ We have 40 depots nationwide
- ✦ 260 logistics employees
- ✦ Local teams who understand the area
- ✦ Drivers who know your specific requirements on farm
- ✦ Over 270,000 orders are delivered each year across the UK
- ✦ 98% of orders are on time and in full – sets the standard for the industry

There when you need it

- ✦ All products from one place, to the right store at the right time
- ✦ No waiting for separate deliveries from different suppliers
- ✦ Same day deliveries if urgently required

Peace of mind



- ✦ If spraying is missed, agronomy customers can return unused product
- ✦ All products and advice supplied is covered by warranties and professional indemnity

Customer service



- ✦ Dedicated customer services team
- ✦ Extended working hours in busy season

We're on our way



- ✦ Opt-in to receive delivery alerts by phone/text to let you know time of delivery
- ✦ Plan your day without worrying about delivery times

Ad-van-tage



- ✦ We have more than 150 lorries and vans
- ✦ Vehicles are maintained to the highest standard

GREEN HORIZONS

Green Horizons is Agrii's commitment to lead the way in sustainable food production and support our customers in becoming more resilient in an increasingly uncertain world. To prepare for and meet the challenges of tomorrow, whilst ensuring agriculture remains sustainable and profitable, crop creativity and innovation will become even more important.

We understand these challenges and are working with our customers and our partners in the industry, towards achieving truly sustainable farming systems.

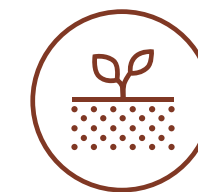
The Green Horizons Five Point Plan



Increasing farm productivity and viability



Providing integrated whole farm solutions



Improving soil resilience



Enhancing the environment



Extending stakeholder engagement

Integrating livestock into the rotation is a key part of a regenerative agriculture approach. Livestock grazing of cover or cash crops on arable land not only provides a natural source of organic matter, but also encourages new plant growth, which increases the amount of carbon returned to the soil, driving nutrient cycling and recycling.

Herbal leys are also becoming increasingly popular as they have been shown to provide benefits for livestock, biodiversity and soil health. This means that for livestock farmers, there may be opportunities for animals to benefit from the same strategies that improve soil fertility and productivity.

Permanent pasture builds and maintains soil organic carbon faster than rotational arable cropping. The absence of cultivations and use of continued cover prevents carbon losses from occurring. With almost 60% of UK agricultural arable land used for livestock, grazing management is an important part of achieving net zero within agriculture. A well managed grazing system can lead to greater accumulation of soil carbon compared to a non-grazed system.

As part of our Green Horizons Initiative, we have produced a series of Insight Reports outlining the role that Agrii, and farming in general can play, in achieving each of the elements of the Five Point Plan.

You can find out more about Green Horizons and view these Insight Reports at www.agrii.co.uk/greenhorizons



INSIGHT REPORT 1: Improving Soil Resilience
Provides more information on regenerative agriculture and integrating livestock into the rotation.



INSIGHT REPORT 2: Enhancing the Environment
Provides more information on the role of forage systems in reaching net zero and different management strategies to help achieve this.



INSIGHT REPORT 3: Providing Integrated Whole Farm Solutions
Provides more information on the work Agrii is doing to support reduced use of crop protection chemistry in an IPM/IFM approach.



INSIGHT REPORT 4: Increasing Farm Productivity and Viability
Provides more information about the work and research Agrii is doing to maximise productivity in an environmentally sustainable way.



INSIGHT REPORT 5: Extending Stakeholder Engagement
Provides more information about the work that Agrii is doing to extend engagement with stakeholders at all stages of the agri-food chain.

PROTEIN & HOME-MIXING

PROTEIN SUPPLEMENT RANGE FOR HOME-MIXING

Agrii offers a range of products to meet all ruminant livestock requirements for protein, from baby calves to finishing and breeding stock and lambs to in-lamb ewes.

The range comprises of different specification supplements depending on requirements, but all are in a lightly molassed meal form, not pelleted, helping to prevent sorting and de-mixing if incorporated with cereals.

All products are supplied in 25kg bags (Agrii 40 also in bulk) for easy and accurate mixing or addition to rations. They are all free-flowing and can be top-dressed on to cereals or forages if no mixing facilities are available.

WHY DO RUMINANTS NEED PROTEIN?

- + Lean growth and development
- + Milk production
- + Immunity to disease and parasites

Good quality protein is required for lean muscle deposition, which is why young stock and growing animals require higher levels in their rations. Less emphasis is needed on protein for finishing stock, although entire male animals require more protein than females or castrates and more muscular breeds need more protein than traditional breeds.

Additional protein improves colostrum quality and yield and overall milk output in cattle and sheep.

The immune system uses immuno-proteins and antibodies to fight infectious challenges from bacteria, viruses and parasitic organisms. Stock that are fed inadequate amounts of protein in their diet are more likely to suffer disease and will not perform to their potential.

SIMPLE TO USE AND FLEXIBLE

Your own cereals + Agrii protein supplement = Finished ration (+/- forage)

If cereals are not available the protein supplement can be top-dressed directly onto a forage down a feed trough or incorporated with the forage in a feeder wagon. No further additions are necessary as our protein supplements are fully mineralised (apart from Agrii 40).

THE PRODUCT RANGE

Hi Pro 50: An economical urea-based 50% protein supplement formulated for low inclusion rates and ideal for mixing with cereals. One bag per tonne addition rate increases the protein level by 1%. Typically 4 bags added to 900kg cereal will make a 14-15% protein finished mix. Fully mineralised and dust-free. Cattle and sheep versions are available, plus versions with added yeast supplement.

Combi-Pro 50: Also supplies 50% protein for low inclusion rates with cereals and for top-dressing. This supplement is soya based and is ideal for young stock and lactating animals where the natural protein drives performance. Fully mineralised and dust-free, with cattle and sheep versions available.

Agrii 40: A 40% protein supplement that offers wide flexibility in use and is suitable for all classes of stock from pre-ruminants to finishing stock, breeding animals and lactating cows and sheep. The specification includes 50% soya and is non-urea, no minerals are added to this supplement giving you complete flexibility to use a mineral best suited to your application. This supplement contains a high level of rumen bypass protein (DUP), which makes it the ideal complement to grass and grass silage based rations.

HOW MUCH PROTEIN IS REQUIRED?

Typical inclusion rate is 4x25kg bags to 900kg barley. Where wheat is included in the cereal component this could be reduced to 3 bags, and if oats are included then up to 5 bags might be required.

For top-dressing the amount of protein required depends on a number of factors, such as forage quality, the target performance and the age and weight of the stock.

For accurate rationing we recommend having forages and cereals tested so the feeding level can be precisely determined (please contact Agrii for more details).

CATTLE:
0.5-1kg/day



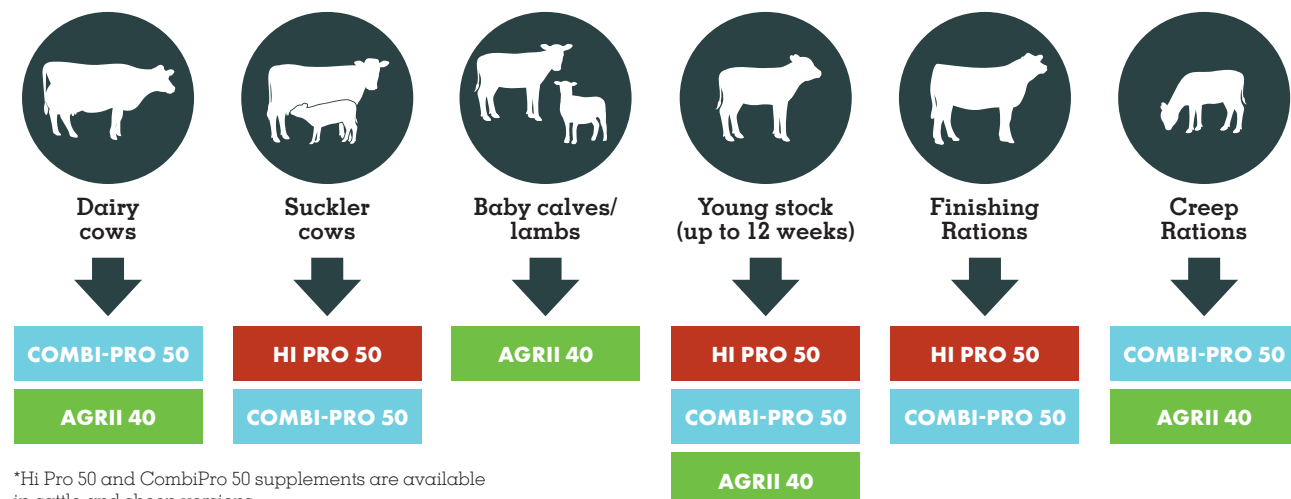
EWES:
0.1-0.25kg/day



CALVES:
0.25-0.5kg/day



WHICH PROTEIN SUPPLEMENT SHOULD I USE?



*Hi Pro 50 and CombiPro 50 supplements are available in cattle and sheep versions.

COMPOUND FEED & FEED EQUIPMENT

LLOYD'S ANIMAL FEEDS

Agrii has a close and successful business relationship with Lloyd's Animal Feeds and we are able to supply compound feeds for the beef, sheep and dairy sectors of the farming industry.

Based in Oswestry, Lloyd's produces very high quality products, available in both bulk and bags, delivering over a large area. They deliver on behalf of Agrii. Internal and on farm support is an important addition offered by the highly qualified staff at Lloyd's.



Lloyd's animal feeds offer a bespoke range of animal nutrition exclusively formulated for Agrii customers.

- Fixed formulations
- Fixed pricing contracts
- Nutritional advice
- On farm rationing
- Complete service

Contact your Agrii representative for more information



AGRII IS A STOCKIST OF JFC EQUIPMENT

Feeders and feed equipment



Fast fill double water trough DT90FF



Gate fence feeder CF80



Haybell HB01

VITAMINS, TRACE ELEMENTS & AVAILABLE PRODUCTS

VITAMINS, TRACE ELEMENTS & AVAILABLE PRODUCTS

TRACE ELEMENT AND MINERAL BUCKETS

Agrii trace element mineral tubs and bag minerals provide a constant supply of readily available minerals and trace elements for both cattle and sheep, either at grass or housed to suit all conditions.

The Agrii range has been formulated by determining the needs of livestock by first looking at the availability of mineral/trace elements from soil and forage. Analysis of vitamin and mineral status has identified very low levels of selenium and cobalt, and decreased levels of zinc and iodine.

High levels of antagonistic minerals such as iron, molybdenum, potassium, manganese and aluminium can have a profound effect on the availability of minerals and trace elements.

Trace element drenches such as Superthrive and a selective range of both sheep and cattle buckets contain chelated trace elements to help to protect against antagonists.

ORAL DRENCHES:

Superstock Thrift offers selenium, cobalt and vitamin B12. **Superthrive Sheep** is a broad-spectrum vitamin and trace element drench with the added advantage of chelated trace elements. (See page 9 for details)

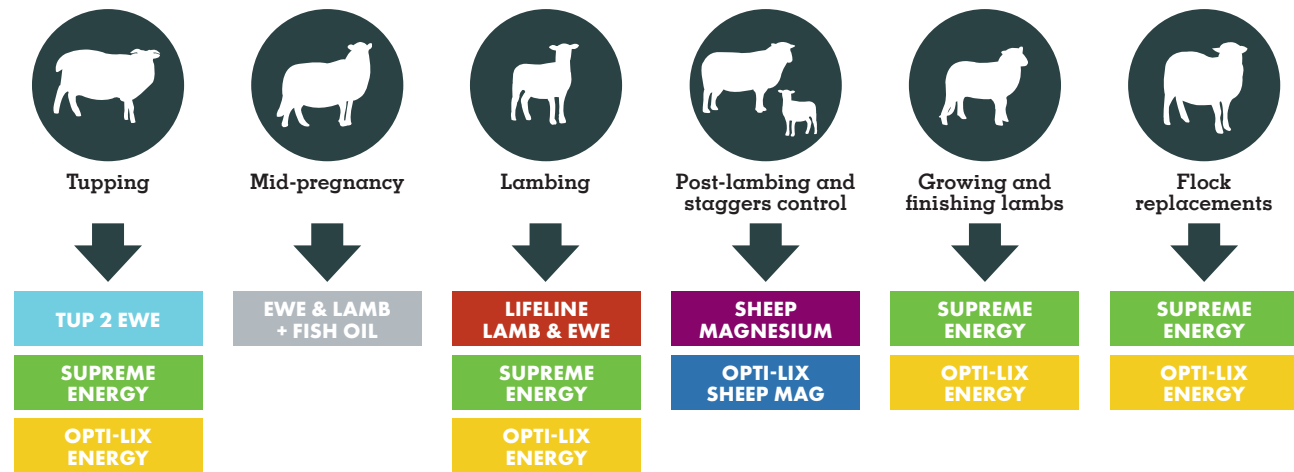
BOLUS RANGE:

The sheep bolus range is available with trace elements including selenium, iodine, and cobalt, also available with added copper if required, offering 6 months supply. Available as an adult sheep and lamb bolus. An ideal alternative for pre-tupping, pre-lambing, lamb weaning and overwintering.

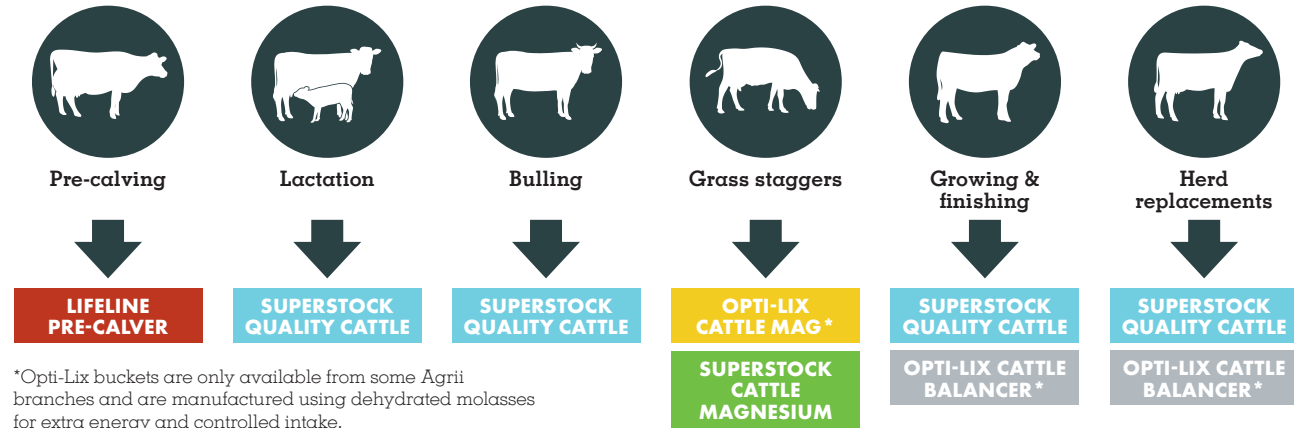
The cattle bolus range offers a sustained release of trace elements and vitamins, designed for grazing and forage fed animals and to help manage the trace element status of the herd during critical periods of the production cycle. Available with or without iodine.

To help achieve the required amount of the correct product, Agrii offers an analysis service to determine availability of vitamins and trace elements.

WHICH BUCKET SHOULD I FEED TO SHEEP?



WHICH BUCKET SHOULD I FEED TO CATTLE?



*Opti-Lix buckets are only available from some Agrii branches and are manufactured using dehydrated molasses for extra energy and controlled intake.

Please contact your local Downland retailer for more information on Opti-Lix products.

AGRII SUPERTHRIVE SHEEP

Agrii Superthrive Sheep is a high specification trace element and vitamin drench containing the required ratio of chelated and unchelated forms of trace elements and vitamins, manufactured to a correct balance.

The formulation is based on the analysis of soil and forage samples, formulated and manufactured to meet the animal's needs. The use of chelated trace elements optimises performance at times of greatest need, for example, growing lambs, lambs at weaning, ewes at pre-tupping and pre-lambing.

Another benefit of trace elements in the chelated form is to avoid 'lock-up'. Lock-up is the result of an interaction in the gut between an element in excess and another trace element. Chelates are designed to increase the availability of trace elements to the animal in situations where high levels of antagonists will cause lock up.

As a follow-on from the Superthrive Oral, the Agrii Superthrive minerals are the ideal high quality product designed to provide the continuity required and maintain the levels obtained from the drench.



SUPERTHRIVE LAMB AND EWE WITH COPPER 5 LITRES CODE: SUPERT
SUPERTHRIVE EWE AND LAMB NO COPPER 5 LITRES CODE: SUPERTH001

Please note: other quantities are available.

N.B. When used in conjunction with a wormer, dose separately, do not mix, always use the Superthrive first.

WHAT DOES IT DO?

- + Supports the Immune System
 - Promotes efficient conception rates and lambing percentages
 - Shortens the lambing period
 - Reduces barren ewe numbers
- + Provides increased resistance to infection
 - Promotes better growth rates and faster finishing
 - Improves carcass quality
- + Leads to fitter ewes and stronger lambs
- + A free-flowing product
- + Available in 2.5 litre and 5.0 litre pack

SUPERTHRIVE IS AVAILABLE WITH OR WITHOUT COPPER



CALF & LAMB REARING

KEY STRATEGIES TO OPTIMISE THE GROWTH OF YOUR CALVES

A key element to remember when changing calf housing is to ensure advice received is relevant to your farm. No one farm is the same as another and therefore there is no one blueprint suitable for everyone to work from.

Trials work has found that 50% of calves experience some sort of scours. Vets are reporting that the vast majority of cases are due to Cryptosporidiosis. This is caused by parasites and can lead to watery, yellow scours. Good hygiene practices are essential, as it can be spread in the environment, via other calves and from dams.

Agrii advisers can provide advice on all areas of calf rearing.

MILK POWDERS

LIFEGUARD

Lifeguard embodies a set of principles from Volac that drive milk formula.

- + A carefully selected blend of Imunopro®
- + Specially designed for beef or mixed enterprises
- + For non-replacement animals
- + Gardion® health package
- + Elevated leucine



Blossom Easymix 20kg	BLOSSO001
Enerlac Instant 20kg	ENERLA002
Heifer Lac 20kg	HEIFER001

Please note: other quantities are available.

FRESHSTART CALF MILK REPLACER

Downland Supreme is made using evaporated milk that is spray dried to ensure quick mixing and ease of digestion.

Downland Supreme Calf Milk Disp 20kg **DOWNLA021**

Please note: other quantities are available.

Please contact your local Downland retailer for more information.



CASE STUDY

Farm Facts

- + 300 acre mixed stock, arable and grassland farm in Gloucestershire
- + Farmed in partnership by David and Trudi Davies
- + 250 Ewes
- + 25 Suckler cows
- + Produce 100 finished cattle a year
- + Rear 700 Belgium Blue x Friesian calves annually

The calves are purchased from one farm and arrive at an average of 3 weeks or 40kg. They are fed Volac Blossom Easimix through an automatic feeder at a mix rate of 150g made up to 1 litre.

Calves are weaned at 9 weeks moving onto an adlib 18% coarse blend diet plus adlib straw. They are sold aged 16 weeks or a minimum weight of 150kg. The average DLWG of all calves is 1.25kg per head per day. Calves are sold privately or to one calf buying group to be grown on and finished.

"Following guidance from our animal health advisor, we switched to Volac Blossom Easimix and haven't looked back. Our calves are healthier, shinier and the DLWG in particular has been very impressive." David Davies

CADE LAMB REARING

Hand rearing pet lambs requires a higher degree of labour and effort compared to a ewe who rears her own lambs.

LAMB FORCE

Lamb Force is sourced from ewe's milk. The milk is carefully dried to maximise the digestibility of the protein for optimum growth and to protect the antibodies in the milk to aid development and health. Lambs prefer it as it is just like mother's milk.

Lamb Force 5kg	LAMBMI003
Lamb Force 10kg	LAMBMI002
Lamb Force 20kg	LAMBMI

Please contact your local Downland retailer for more information.



CYDECTIN TriclaMox Drench

FOR THE TREATMENT & CONTROL OF FLUKE & WORMS

Features & Benefits



- A combination fluke & worm drench
- Manages mixed burdens in one treatment
- Contains moxidectin
 - A potent formulation providing the most effective* ML efficacy against resistant worms
- - Provides up to 35 days persistent worm control
- Contains triclabendazole
 - Effective against all stages of fluke
 - Early immature, Late immature, Adult
- Can be used for up to 6 months once broached
 - Allows flexibility of flock treatment which supports a selective treatment strategy
- Meat withhold 31 days

* Ranjan, S. et al. Vet Parasitol. 2002

CYDECTIN TRICLAMOX 1 MG/ML + 50 MG/ML ORAL SOLUTION FOR SHEEP contains moxidectin and triclabendazole, POM-VPS. For further information: Zoetis UK Limited, First Floor, Bichwood Building, Springfield Drive, Leatherhead KT22 7LP. www.zoetis.co.uk. Customer Support: 0845 300 8034. Use medicines responsibly (www.nah.co.uk/responsible). Date of preparation: July 2020 PM-02951



ChanaVerm 7.5%



Low volume worm dose for cattle & sheep

Contains Levamisole (Yellow Wormer)

Available at Agrii.



Contains: 7.5% w/v levamisole hydrochloride. Target species: Cattle and sheep. Refer to product packaging and leaflets for full indications, side effects, precautions, warnings and contra-indications. Use medicines responsibly. Further information can be found on the datasheet, SPC or at www.farmhealthfirst.com. Distributed by: Chanelle Pharmaceuticals Manufacturing Ltd, Loughrea, Co. Galway, Ireland. UK: POM-VPS VM11990/4002. Copyright © Chanelle Pharma 2020. All rights reserved

PARASITE CONTROL

INTERNAL PARASITE CONTROL

Agrii can offer a wide range of products for internal parasite infections of roundworm, tapeworm, lungworm, liver fluke and Coccidiosis for both sheep and cattle from all anthelmintic groups.

A major factor facing the industry regarding internal parasite control is the incidence of anthelmintic resistance, which has shown a marked increase in the UK, evident in sheep flocks.

One way to establish the need to worm and help reduce resistance, is to use the correct product, at the right time, using routine faecal egg counts (FECs). FECs will establish the number of worm species present and the need to treat. Results are normally available on the same day.

PRODUCTS FALL INTO THE FOLLOWING GROUPS:

- | | |
|--|--------|
| 1. BZ Benzimidazoles: | WHITE |
| 2. LV Levamisole: | YELLOW |
| 3. ML moxydectin, avermectins and ivermectins: | CLEAR |
| 4. AD Monepantel: | ORANGE |
| 5. SI Derquantel – available as a multi-active (vet only): | PURPLE |

TIMING AND CORRECT USE OF PRODUCT IS ESSENTIAL

- + **Group 1 anthelmintics are advised for early lamb dosing for the control of Nematodirus.** Products from groups 2 and 3 can then be used as follow on products according to the time of year, weather patterns and worm species. Group 4 products are ideal for quarantine dosing to avoid bringing resistant worms onto the farm, and for the autumn/winter store lamb buyer for complete and satisfying worm control.
- + **Liver fluke control also needs to be monitored.** Triclabendazole needs to be used sparingly to avoid resistance if there is an alternative product available: Clorsulon, Closantel, Nitroxynil and Oxytoclozanide can be used as alternatives, bearing in mind the time of year, weather patterns, and the liver fluke life cycle.
- + **There are also a number of combined liver fluke and worming products available.**
- + **Coccidiosis is primarily a problem for both lambs and calves** when the immune system starts to lower from previously effective colostrum. This is common from about 6 to 8 weeks of age and treatment can be by oral dosing with an approved product. Also available as a molassed bucket with a corresponding prescription.

Speak to your Agrii RAMA (Registered Animal Medicine Advisor) for more information and further advice if required.

WANT TO MAXIMISE THE RETURN ON YOUR LAMBS?



CHECK WORMERS ARE WORKING WITH REGULAR FEC TESTING

Available at Ludlow and Stockton-on-Tees.
On-farm system also available - quote 'Agrii' on enquiry.

Agrii

FECPAK^{G2}
www.fecpak.com

PARASITE CONTROL

EXTERNAL PARASITE CONTROL

FLIES, TICKS, LICE AND SHEEP SCAB MITES CAUSE MAJOR PROBLEMS AND ECONOMICAL LOSS IN BOTH SHEEP AND CATTLE

BLOWFLY STRIKE usually occurs between May and September, but is weather dependant and high temperatures in early autumn can see this pattern extended. There are a number of products available for control of Blowfly Strike, namely those which when applied prevent the eggs from hatching. These products will not control fly strike at the time of treatment, so correct choice of product is essential.

Products containing cypermethrin or deltamethrin will give control of fly strike present at the time of treatment. Agrii stocks fly control products for cattle available with pour-ons, fly tags and buckets.

LICE: Products are available for lice control in both sheep and cattle including combined products for cattle at housing, to include both lice and worm control. Available as a pour-on or dipping product (sheep only).

SHEEP SCAB: This is now recognised as one of the most problematic external diseases in sheep flocks.

The mite can be infected from contaminated wool from fences or hedges, and also from sheep transport and handling facilities.

Products to prevent and treat sheep scab are available to inject or dip.

The product of choice for both treatment and prevention is Moxidectin 2% injectable. It has a persistent effect, preventing infection or re-infection for sheep scab for up to 28 days.

Information correct at the time of publishing – always check the data sheet and product packaging before applying products, check the application rates and withdrawal durations.

ONE OF THE TELL TALE SIGNS OF SHEEP SCAB IS SHEEP THAT RUB THEMSELVES ON GATES OR FENCES TO TRY AND ALLEVIATE THE IRRITATION. THIS CAN CAUSE FURTHER DISTRESS.



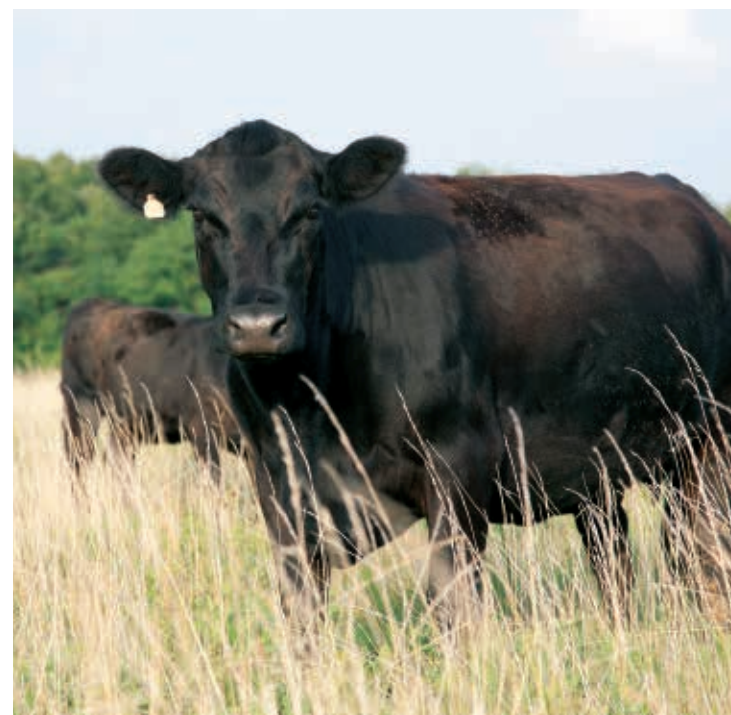
Failure to identify signs of sheep scab early or instigate appropriate treatment, can result in severe production loss.



Sheep scab in pregnant ewes can result in the birth of small lambs, and subsequent high prenatal lamb mortality rates or poor lamb growth.



Wool loss, serious exudation, inflammation and self-inflicted trauma due to sheep scab in a Mule gimmer.



VACCINE PROGRAMMES

There are many factors which can cause problems in unvaccinated sheep and cattle. Agrii's qualified staff can advise on the correct products for clostridial diseases, *Pasteurella*, footrot, rotavirus and coronavirus.

Timing is important to make sure that sheep and cattle are fully vaccinated and the immune system is capable of fighting off disease before the onset of problems.

For housed stock, good ventilation, clean bedding and not overcrowding will help to alleviate problems, particularly *Pasteurella*.

TRIGGER FACTORS CAUSING PROBLEMS IN UNVACCINATED LIVESTOCK INCLUDE:

- + **Stress:** e.g. dipping, castration, shearing, dosing and collecting and bunching for treatment.
- + **Climate:** e.g. warm still weather, cold, wet, windy weather, prominent changes in day and night temperatures.
- + **Changes in diet:** e.g. movement to rape, turnips or aftermath, sudden increased plane of nutrition, transportation.

PRODUCT	DISEASE COVER	RECOMMENDATIONS
Heptavac P Plus	An aid in the control of pneumonic pasteurellosis, primarily in breeding ewes over 3 weeks of age. Also their lambs, providing the lambs receive sufficient immune colostrum during 1-2 days of life.	Initial dose of 2 primary doses of 2.0ml at 4 to 6 week intervals, followed by an annual booster dose or at times of heightened <i>Pasteurella</i> incidence on farm.
Ovovac P Plus	An aid for the cover of four clostridial diseases, also an aid for control of pneumonic Pasteurellosis in lambs of all ages from a minimum age of 3 weeks. Product of choice for fattening and store lambs.	Initial dose of 2 doses of 2.0ml at 4 to 6 week intervals. Followed by an annual booster dose or at times of heightened <i>Pasteurella</i> incidence on farm.
Bravoxin 10	A broad spectrum vaccine for sheep and cattle against disease associated with clostridial bacteria, including Blackleg cover for cattle.	Dose for sheep from 2 weeks of age: 1.0ml. Dose for cattle from 2 weeks of age: 2.0ml. Primary vaccination 2 doses 4 to 6 weeks apart. Booster dose required after 12 months.
Footvax	As an aid for the vaccination of sheep for prevention and treatment of footrot caused by <i>Bacteroides Nodosus</i> .	Initial course: Two doses of 1.0ml 6 weeks apart. Subsequent doses annually unless there is a footrot problem arising from conditions which may trigger a further outbreak, which will require a further dose. N.B. Not to be used in conjunction with Moxidectin 1%.
Rotavec Corona	To promote active immunisation of pregnant cows and heifers to raise the antibodies <i>E. coli</i> F5 (K99) antigen, rotavirus and coronavirus to protect the offspring via colostrum.	Essential that the calf receives adequate colostrum to ensure efficiency of the vaccine. Administer a single dose of 2.0ml to be given during each pregnancy between 12 and 3 weeks prior to calving.

LIVESTOCK HYGIENE

DISINFECTANTS

Disinfectants need to be fit for purpose. Not one chemical active will help prevent or treat all diseases! DEFRA has a list of approved disinfectants for all routine cleaning and disease control.

Products available from Agrii:

TOTAL FARM DISINFECTANT

- + An iodine broad spectrum disinfectant:
Defra TB Approved

5 litres **TOTALF001**

25 litres **TOTALF002**



BLITZ

- + A versatile disinfectant, effective against all viruses, bacteria and fungi.
- + Blitz is also **non-hazardous** at in-use dilutions.
- + Suitable for all surfaces and equipment by spraying or fogging, and can be used on pens, cubicles, stables, feeders, drinkers, boxes, grain and potato stores, cages, lorries, trailers, larders, pipes, tanks, hoof dipping, boot dipping, water system sanitising, water and milk treatment and whey preservation.



5 litres **BLITZD001**

FOOTBATH PRODUCTS

Golden Hoof is the UK's leading veterinary licenced zinc sulphate footbath, fully tested in extensive field trials for proven efficacy. Each batch is tested for compliance with specification, guaranteeing quality and effectiveness. Golden Hoof is now licenced to contain zinc hexahydrate, the best and most efficient zinc preparation with considerably improved zinc content. Lethal to footrot bacteria, Golden Hoof penetrates ovine hoof horn more readily than other anti-bacteria agents.

TK DOUBLE D GEL HOOF SPRAY

- + TK Double D Gel is a hoof spray designed for spot-on use on individual cows and sheep. The spray can be used when foot trimming or can be sprayed onto the back of the hoof in cattle. In sheep, spray between the claws.

500ml Spray **TKDOUB003**



TK DOUBLE D INTENSIVE FOOTBATH FOR CATTLE & SHEEP (USE AT 2%)

- + TK Double D is an intensive footbath chemical for cows and sheep. This product is not designed to be used as a regular maintenance product.
- + For CATTLE: TK Double D is designed to be used once a day for 5 days (Monday to Friday) then 2 days (weekend) of no foot bathing, followed by another 5 days on and 2 off. The 2 days of no foot bathing are important to allow drying out so the cows should either be run through no footbath or a dry footbath on these 2 days. After the 2 weeks, treatment should return back to the use of a maintenance product.
- + For SHEEP: use as a footbath when foot bathing. Aim to stand in the bath for five minutes for optimal effect. Exit onto clean concrete to allow the chemicals to dry on.

5 litres **TKDOUB002**

25 litres **TKDOUB001**

AGRII IS A STOCKIST OF JFC PRODUCTS



Cow Footbath (profiled base)
FB4



Sheep Footbath (profiled base)
FB5



Narrow Interlocking Footbath (smooth base)
FB7



The Master Leys range of grass mixtures is tried and tested, and repeat ordering has enabled us

to grow. Master Leys has become one of the most popular brands within the UK, as we offer a full and comprehensive range of mixtures for all types of farming systems and regions throughout the UK.

Working in close coordination with leading grass seed breeders throughout the UK and Europe, Agrii is able to access the best varieties to formulate the Master Leys portfolio. In addition to this, we aim to support UK agriculture wherever possible by growing over 80% of the grass seed used to produce Master Leys on UK farms. This also enables us to have greater control over the quality of the seed we use and ensures that what goes into a Master Leys bag is of the highest possible standard.

Having an independent trialling system for grass and clover is extremely important for grassland farmers across the UK. This ensures progression is made in the field to produce the maximum amount of quality home grown forage. This independent data is showcased in the Recommended Grass and Clover List for England and Wales. At Agrii, we have representation on both the herbage crop committee and the project board which helps determine which new varieties are added to the list and which outdated varieties are taken off.

Using the Grass and Clover Recommended List we can then choose which varieties we use to make Master Leys mixtures. By doing this we can capitalise on the individual strengths of each variety which will include yield, D Value, ME yield, ground cover, winter hardiness, disease resistance, seasonal growth and persistency.

Taking into account the individual variety strengths, we can then formulate the best possible mixture, which in turn will give you the best potential within your sward.

To help reduce the reliance on bought-in winter feed, we also offer a wide range of root seeds which will help provide additional home grown winter forage. By visiting trial sites and working closely with the breeders, it means we are able to choose and offer the best varieties across all species of roots. Not only can we offer the best varieties, we can also offer advice on establishment techniques, nutrition for the crop and agrochemical inputs, to help you achieve maximum forage output. Along with this, we can also offer advice on feeding the crop to help reduce wastage and to make sure the crop that you have grown is utilised to its full potential.

Please see [page 18](#) for more information.



MIXTURE SELECTOR

THINGS TO CONSIDER...

1. How long would you like it to last?

2. Are you grazing, cutting or both?

3. Would you like clover in the mix?

	MIXTURE	LONGEVITY IN YEARS	MIXTURE PURPOSE	SUITABILITY FOR GRAZING	SUITABILITY FOR CUTTING	SUITABILITY FOR HAY	CLOVER VERSION AVAILABLE	NO CLOVER VERSION AVAILABLE	SEED RATE KG/ACRE	AVERAGE HEADING DATE
SHORT TERM	Bulk Master	1-2	One to two year bulky silage ley	*	*****	****	✗	✓	14.00kg (25kg bags)	20th May
	Silage Master	2	Two year bulky silage ley	**	*****	***	✗	✓	14.00kg	21st May
	Cut Master	3-4	Three to four year productive cutting ley with aftermath grazing	***	*****	*	✗	✓	13.00kg	26th May
MEDIUM TERM	Protein Master	3	Three year productive red clover cutting ley with aftermath grazing	***	*****	*	✓ (Red)	✗	13.00kg	21st May
	Drought Master	5-6	Five to six year cutting and grazing mixture	****	****	*	✓ (White)	✓	14.00kg	27th May
	Forage Master (previously known as Field Master)	5-6	Five to six year dual purpose ley (Early Bite)	****	****	**	✓ (White)	✓	13.00kg	30th May
	Field Master (previously known as SW Field Master)	5-6	Five to six year dual purpose ley	****	****	***	✓ (White)	✓	13.00kg	30th May
LONG TERM	Sward Master	6+	Six year plus intensive grazing mixture (Early Bite)	*****	***	***	✓ (White)	✓	13.00kg	1st June
	Sward Master PLUS	6+	Multi-species grazing mixture	*****	**	*	✓ (White)	✗	13.00kg	1st June
	Stock Master	6+	Six year plus cutting and grazing mix	****	****	**	✓ (White)	✓	13.00kg	4th June
	Multi Master	6+	Six year plus cutting mixture	***	*****	*	✗	✓	13.00kg	28th May
OVERSEEDING MIXTURES	ST Over Master	1-2	Rejuvenate existing pastures to increase yields and improve quality for two years	*	*****	*	✗	✓	10.00kg	18th May
	MT Over Master	3-4	Rejuvenate existing pastures to increase yields and improve quality for three to four years	***	****	*	✓ (White)	✓	10.00kg	19th May
	LT Over Master	5+	Rejuvenate existing pastures to increase yields and improve quality for five years plus	***	****	*	✓ (White)	✓	10.00kg	31st May

Aim to cut 5-10 days before average heading date for optimum silage

ROOTS

FODDER BEET is a high yielding crop that can be grazed in situ or lifted and clamped to feed over the winter. This high energy feed is extremely palatable and will improve milk yields and daily live weight gain. The high dry matter types are generally a harder beet which sits deeper in the ground making them more winter hardy and suitable for lifting. The medium dry matter types are softer and are suitable for both lifting and grazing. Low dry matter types are very soft and are only suitable for grazing. These low dry matter types should be utilised first as they can be susceptible to frost damage.

SWEDES are commonly known to be the only true winter hardy forage and will produce high dry matter yields and valuable high energy winter feed for overwintering stock. Like any brassica, stock should be introduced slowly and have access to either a grass or stubble run-back. This cost effective crop is normally grazed in situ and it is important to choose a variety that will cover the period you want to graze. It is also very important to decide how you are going to sow your swede seed. If precision drilling, you must use (graded) grade H seed and if direct drilling or broadcasting, you will require natural seed.

FORAGE RAPE is a fast growing leafy catch crop which is high in protein and can be ready to utilise between 10-14 weeks from sowing in optimum conditions. Forage rape is ideally used for finishing lambs or flushing ewes and can also be grazed by cattle. The feeding of any brassica should be introduced gradually over a two week period and strip grazing throughout the season is recommended to help prevent waste. Ideally there should be a grass run-back along with access to hay or silage and water. The 'hybrid' types and true forage rapes can help to extend the grazing season as they have good winter hardiness and are longer lasting than stubble turnips. They will also produce more yield from a later sowing compared to stubble turnips.



OUR FULL ROOTS OFFERING IS AVAILABLE IN THE AGRII GRASS & ROOTS CATALOGUE.
Please request a copy from your usual Agrii contact or email info@agrii.co.uk.

KALE produces high yields and is high in protein, which can help bolster forage demands in the winter. It's traditionally strip grazed behind an electric fence to help reduce waste, making it an economical crop to grow. A grass run-back is recommended and silage or hay should also be made available whilst grazing the crop. It can also be harvested and fed by zero grazing as well. Depending on sowing date, it is generally utilised from late August through to March which makes it suitable for overwintering livestock. Kale is higher yielding and more winter hardy than rape/kale hybrids however it will take longer to produce a crop.

STUBBLE TURNIPS are a low input crop which can help reduce winter feed costs for sheep and cattle, making them an economical crop to grow. They are quick to establish and fast growing which means they can be ready to utilise between 10-14 weeks from sowing in optimum conditions. They have a higher Metabolisable Energy (ME) content compared to forage rape, but are lower in protein. There are two types of stubble turnips; bulb and bulbless. The bulb types are suitable for finishing lambs over the autumn/winter period and the bulbless (very leafy) types are ideal for summer buffer feed for cattle and sheep. The feeding of any brassica should be introduced gradually over a two week period and strip grazing throughout the season is recommended to help prevent waste. Ideally there should be a grass run-back along with access to hay or silage and water. To avoid milk taint, dairy cows should be fed stubble turnips immediately after milking or removed from the crop three hours before milking.

ROOTS: SEED SELECTOR

SPECIES	SUGGESTED SEED RATE KG/ACRE	SUGGESTED SEED RATE KG/HA	DRILL DATE	UTILISATION PERIOD	AVERAGE DM YIELD (T/HA)	AVERAGE FRESH YIELD (T/HA)	DRY MATTER %	CRUDE PROTEIN %	DIGESTIBILITY VALUE %	METABOLISABLE ENERGY (MJ/KGDM)
Fodder Beet	40,000 - 50,000 seeds Sold in 50,000 packs	100,000 seeds	Late March - Late April	Oct - March	15 - 18	80 - 100	15 - 23	12 - 13	78	12.5 - 13
Swedes	Precision Drill: 150g - 350g Drill: 1kg Broadcast: 1.5 - 2kg	Precision Drill: 370g - 860g Drill: 2.5kg Broadcast: 3.7 - 5kg	April - June	Sept - March	7 - 10	70 - 90	10 - 13	10 - 11	82	12.8 - 13.1
Kale	Drill: 1.5 - 2.0kg Broadcast: 2.5 - 3kg	Drill: 3.7 - 5kg Broadcast: 6kg - 7.5kg	April - Early July	Late Aug - March	8 - 10	60 - 70	14 - 16	16 - 17	70 - 75	10 - 11
Maincrop Turnips	Drill: 1 - 1.5kg Broadcast: 2kg	Drill: 2.5 - 3.7kg Broadcast: 5kg	June - July	Sept - Feb	5.5 - 6	50 - 60	9 - 10	17 - 18	68 - 70	10 - 11
Stubble Turnips	Drill: 1.5kg Broadcast: 2kg	Drill: 3.7kg Broadcast: 5kg	May - End Aug	July - Dec	4 - 5.5	40 - 50	8 - 9	17 - 18	68 - 70	11
Forage Rape	Drill: 2.5kg Broadcast: 3kg	Drill: 6kg Broadcast: 7.5kg	May - Early Sept	July - Dec	3.5 - 4	24 - 35	12 - 13	19 - 20	65	10 - 11
Lamb Tonic*	Drill: 4kg Broadcast: 4kg	Drill: 10kg Broadcast: 10kg	April - End Aug	Perennial (up to 4 years)	10 - 11	65 - 75	14 - 15	21 - 22	68 - 75	11 - 12
Autumn Keep*	Drill: 2.5kg Broadcast: 3kg	Drill: 6kg Broadcast: 7.5kg	May - End Aug	July - Dec	5 - 6	45 - 55	10.5 - 11.5	18.5 - 19.5	65 - 70	10 - 11
Meat Maker*	Drill: 2.5kg Broadcast: 3kg	Drill: 6kg Broadcast: 7.5kg	May - End Aug	Aug - Jan	4.5 - 5.5	35 - 45	12 - 13	19 - 20	65 - 68	10 - 11
Late Lamb*	Drill: 7.5kg Broadcast: 7.5kg	Drill: 18kg Broadcast: 18kg	May - End Aug	Aug - Feb	11.5 - 12.5	65 - 75	16.5 - 17.5	15.5 - 16.5	65 - 70	10 - 11

The figures are a guide and will vary with location, environmental factors and pest pressure. * Limited data.

FORAGE CROP NUTRITION

Agrii has a wide range of fertilisers designed to produce healthy forage and improve livestock health. Bespoke fertiliser can be formulated to specific requirements based upon soil analysis and can also include nutrients beneficial to livestock health such as selenium.

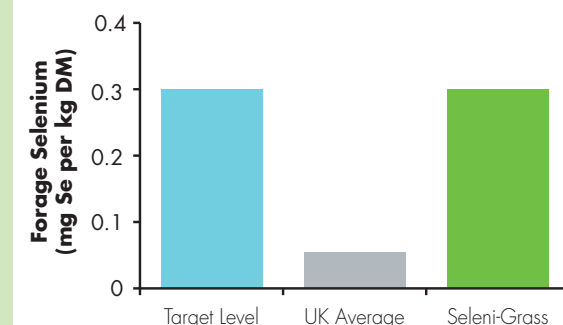
Sulphur is now of major importance as a nutrient, due to a reduction in atmospheric deposition. Sulphur is the building block of protein, helping to improve growth and development. Trial work where sulphur is added shows increased DM yield, ME and protein with reductions in nitrate leaching. It not only aids the uptake of nitrogen but also improves palatability.

Contact your local Agrii Agronomist to help establish the nutrient status of the soil and any organic manure inputs. A Nutrient Management Plan can then be generated to optimise production levels by fulfilling the requirement of the crop with the correct fertiliser.

SELENIUM LEVELS IN FORAGE

Selenium is an essential micronutrient for livestock with deficiency linked to infertility, retained placentas, poor live weight gain and a wide range of sub-clinical symptoms.

Over 90% of UK soils are deficient in selenium with pastures typically only providing 15-20% of dietary requirements.



Why go liquid? Agrii Liquid

BENEFITS OF LIQUID FERTILISER

- ENVIRONMENTAL
- PERFORMANCE
- AGRONOMIC
- OPTIMISATION
- ECONOMIC

For more information on liquid fertilisers, and to request a copy of our liquid fertiliser product guide, please visit the link below, or scan the QR code.
<https://www.agrii.co.uk/why-choose-liquid-fertiliser/>



Origin Sweetgrass

GRASSLAND FERTILISER FOR BETTER ANIMAL HEALTH AND PERFORMANCE

SweetGrass is a high-N grassland fertiliser specifically designed to increase sward palatability and maximise milk and meat production from grass for optimum economic returns.

For more info visit: www.agrii.co.uk/sweetgrass/

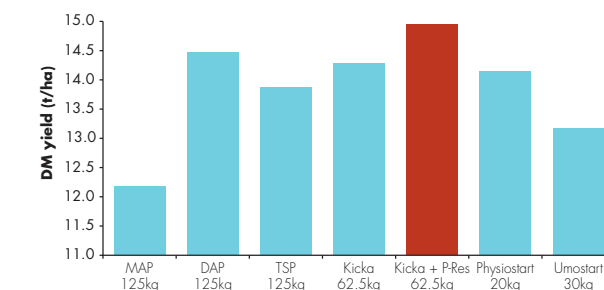
Maize Kicka KICKSTART YOUR MAIZE THIS SPRING

Maize Kicka has been designed as a starter fertiliser with the nutrients required to enable the crop to develop rapidly from an early stage.

- Maize Kicka is a specifically formulated maize starter fertiliser for placement at planting.
- It is a granular compound (2 to 4mm) with the analysis - 18N - 20P₂O₅ - 27.5SO₃ - 0.8%Zn.
- It is treated with "Kicka" - Methanoic Zinc Amonionate - to promote root growth and help the plant access nutrients.
- Maize Kicka is also treated with "P-Reserve" to prevent phosphate lock-up and therefore make more phosphate available to the crop.
- Maize Kicka is cost effective against DAP and is available in both 600kg and 25kg packs to ensure you only purchase the amount you need for your crop area.

SEEDBED FERTILISER - TRIALS RESULTS

Source: NDSM, W, Curtiss, Sinnington, North Yorks



Maize Crop: Kent Maize Kicka Treated versus Untreated 2009

HORSE PADDOCKS

The most important thing for your horse's health is its environment and pasture management. Agrii can provide services and aid product decisions that will help achieve what you need while saving on ever growing costs.

THOROUGHbred FERTILISER

Humber Palmers has been the "first choice" in fertiliser for many of the well known studs throughout the UK and Ireland for over 40 years.

This experience and continuing research has enabled them to develop **TOP Paddock**, a unique nutritionally 'complete' organic based fertiliser specifically formulated for application on all horse and pony paddocks in a safe, naturally efficient and balanced manner.

Top paddock organic fertiliser is supplied in convenient 20kg bags and is easily spread by hand or a mechanical fertiliser spreader.

It has been designed to improve optimum balance of nutrients for animal and pasture nutrition.

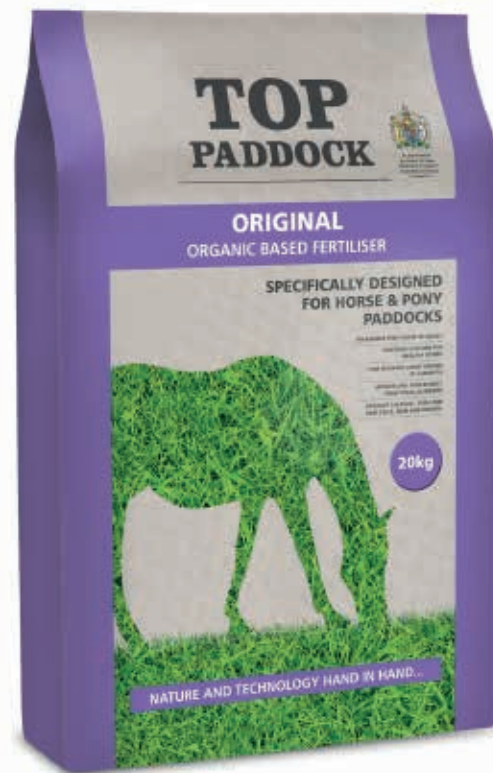
This product has been designed to improve the quality of the grass which should provide a huge saving as far as supplementary feed requirements are concerned.

Top Paddock includes a well researched organic base of vegetable origin, free from any weeds or pathogens, which is combined with carefully selected mineral raw materials. This enables the nutrients to be released in a phased way, providing a natural supply of plant food in line with the pasture's requirements and thereby assisting in protecting the horse and its environment.

In addition, the organic base contains highly beneficial humic substances best described as nature's plant vitamins.

They are responsible for many positive effects on pastures making **Top Paddock** the most complete natural fertiliser on the market for equine use:

- + Promotes photosynthesis.
- + Reduces effect of drought and flood.
- + Increases grass growth.
- + Increases resistance to fungal diseases.
- + Stimulates micro nutrient uptake.
- + Improves soil structure and fertility.
- + Enhances root development.
- + Top Paddock has been proven to last longer than standard mineral fertilisers.
- + Research has shown Top Paddock is up to 25% more efficient than mineral fertilisers.
- + Top Paddock quality grass can save up to £300 a year of supplemented feed.



TOP Paddock:

Feeding – products from the Humber Palmer range are some of the most utilised products amongst our equine customers.



EQUINE MIXTURES

HORSE & PONY MASTER *Plus Perennial Ryegrass*

Horse and Pony Master Plus Perennial Ryegrass contains mostly perennial ryegrasses which are fibrous and prostrate in growth to reduce soil exposure. Horses graze with their lips so the pasture is grazed down like a sheep sward.

The Timothy component will grow earlier even in a wet cold spring. The creeping red fescue spreads quickly by rhizomes and is able to help fill any gaps on areas of heavy usage.

If your horses are shut up, then this mix is also suitable for hay production. This mixture is not suitable for horses prone to laminitis.

- + 4.50kg **Boyne** Intermediate diploid PRG
- + 2.50kg **Toddington** Late diploid PRG
- + 3.00kg **Cancan** Late diploid PRG
- + 1.00kg **Winnetou** Timothy
- + 2.00kg **Maxima** Strong creeping red fescue
- + 13.00kg/acre

LAMI-LESS HORSE & PONY MASTER

The levels of protein and sugars that are in perennial ryegrasses are said to be increasing the chance of laminitis in horses.

As an alternative to our standard horse and pony mix, this mixture is made up of fescues and meadow grasses and does not contain PRG.

The mix will thrive on a wide range of soil types and will create a dense sward for the horses to travel on.

This long term mix is suitable for both grazing and hay production.

- + 2.00kg **Dolina** Timothy
- + 4.00kg **Laura** Meadow fescue
- + 2.50kg **Kolossos** Strong creeping red fescue
- + 2.50kg **Tower** Tall fescue
- + 2.50kg **Evora** Smooth stalked meadow grass
- + 0.50kg **Highland** Browntop bent
- + 14.00kg/acre



HAY MIXTURES

Specialist hay production requires specialist mixtures. For hay to wilt down evenly, the use of 100% diploid species is needed. Tetraploids are a bigger leafier plant with more water in their cell walls. If both diploids and tetraploids are used then you will get an uneven conditioning of the sward. When reseeding the hay mixtures below, they need to be autumn sown so the plant goes through a vernalisation period and produces a stem and a seed head the following year. If spring sown, the plant may only produce lush leafy forage in the year of sowing.

ST HAY MASTER

SHORT TERM HAY MIXTURE

This mix will produce high yielding quality hay for up to two years.

- + 5.00kg **Alamo** Diploid IRG
- + 5.00kg **Fox** Diploid IRG
- + 4.00kg **Boyne** Intermediate diploid PRG
- + 14.00kg/acre

LT HAY MASTER

LONG TERM HAY MIXTURE

Lasting six years plus, this mix will produce high yields of hay with the option of quality aftermath grazing.

- + 2.00kg **AberWolf** Intermediate diploid PRG
- + 4.00kg **Boyne** Intermediate diploid PRG
- + 4.00kg **Toddington** Late diploid PRG
- + 2.00kg **Cavendish** Late diploid PRG
- + 1.00kg **Winnetou** Timothy
- + 13.00kg/acre

HAYLAGE MIXTURES

Haylage tends to be cut earlier in the season and is left to wilt for a shorter period of time in the field compared to hay. As haylage is cut wet, we can mix both diploids and tetraploids together to maintain overall higher yields. When reseeding the haylage mixtures below, they need to be autumn sown so the plant goes through a vernalisation period and produces a stem and a seed head the following year. If spring sown, the plant may only produce lush leafy forage in the year of sowing.

ST HAYLAGE MASTER

SHORT TERM HAYLAGE MIXTURE

(Bulk Master Italian Catch Crop)

Producing high yields of quality haylage, this mix will last up to two years.

- + 30% **Meribel** Diploid IRG
- + 30% **Alamo** Diploid IRG
- + 40% **Gemini** Tetraploid IRG
- + 100% 25kg bags sow at 14.00kg/acre

LT HAYLAGE MASTER

LONG TERM HAYLAGE MIXTURE

Lasting six years plus, this mix will produce high yields of quality haylage with the option of quality aftermath grazing.

- + 4.00kg **Boyne** Intermediate diploid PRG
- + 2.00kg **Triwarwic** Intermediate tetraploid PRG
- + 3.00kg **Toddington** Late diploid PRG
- + 4.00kg **Cancan** Late diploid PRG
- + 13.00kg/acre

MAIZE

It's becoming more important than ever that maize crops grown in the UK are reliable, consistent, high performing and sustainable due to the ever changing seasons and legislation that the industry faces on an annual basis.

With its nationwide coverage of Agronomists and Seed Specialists, Agrii is in an unrivalled position to offer the best possible advice and varieties required to meet the ever increasing demands of maize grown on UK soils.

Whether you're growing maize under degradable film in the North West, AD feedstock in the East, silage for livestock in the South West or even maize for grain in the South East – Agrii can supply the market leading technical advice and varieties you need!

Working closely with international breeders, Agrii is constantly at the leading edge of developments for the UK maize market. Agrii's nationwide Agronomy Team, Seed Specialists and Animal Health Advisors also have access to the most up to date R&D information, herbicide and crop nutrition as well as other associated inputs such as silage additives and degradable film.

R&D is at the heart of Agrii and regional maize trials play a very large part in how we are able to advise the best variety for you and your system. Trial site tours can be organised on a one to one basis at any point of the growing season to identify the key benefits of varieties chosen specifically to be part of the Agrii Portfolio.

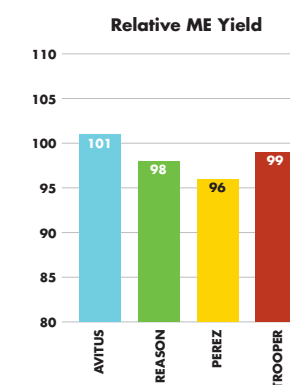
Not only are we able to demonstrate our market leading maize varieties, but also the technical support we can offer to growers which ranges from weed control and seed treatments to foliar nutrition and harvest dates.



These pages illustrate just a few of the maize varieties available in the full Agrii range. For more information please request a copy of the **AGRII MAIZE BROCHURE** from your usual Agrii contact or email info@agrii.co.uk.

AVITUS KWS

- + EARLY
- + FAO 160/170
- + 100% Relative DM yield
- + 18.1 Tonnes DM per Ha
- + 108% Relative starch yield
- + 6.53 Tonnes starch per Ha
- + 101% Relative ME yield
- + 215 GJ ME per Ha



AGRII'S COMMENTS

Avitus continues to break the mould for high yielding and early maturing material. Regularly achieving fresh weight yields in excess of 50t/ha across varying sites, Avitus produces an unrivalled combination of DM, Starch and ME. A truly exceptional variety for any UK maize grower.

BREEDER'S COMMENTS

"Avitus KWS pushes the boundaries of current early forage maize breeding for all livestock farmers. Yields of over 18t/ha of DM and high starch and ME output combined with rapid early vigour and moderate stay green capabilities, results in supreme forage performance."

KWS PASCO

- + EARLY
- + FAO 170/180
- + 33% DM at harvest
- + 104% Relative DM yield
- + 18.8 Tonnes DM per Ha
- + 34.3% Starch at harvest
- + 11.7% MJ per Kg of DM
- + 7.2 Early vigour (FERA/NIAB NL Trials 2019)



AGRII'S COMMENTS

Pasco was identified by Agrii within official and breeders' trials as a stand-out performer from a very early stage. This exciting new variety is a superb addition to the Early sector for growers looking to maximise both very high quality forage and huge overall yields. The big variety with a bright future!

BREEDER'S COMMENTS

"KWS Pasco offers excellent performance for silage production with leading DM yields and quality. A stable single cross hybrid, KWS Pasco is ideal for CCM, moderate to high inclusions within TMR rations and also high starch silage for beef finishing."

GEMA



- + VERY EARLY
- + FAO 150
- + 99% Relative DM yield
- + 17.8 Tonnes DM per Ha
- + 108% Relative starch yield
- + 6.55 Tonnes starch per Ha
- + 99% Relative ME yield
- + 209 GJ ME per Ha

- + Combines yield with an ultra-early harvest date
- + Ultra early maturing, delivering reliable results in a short growing season
- + Tall plant for an impressive crop in the field
- + High starch yields providing high quality silage
- + Good standing ability and excellent early vigour
- + Excellent resistance to Eyespot



AGRII'S COMMENTS

Gema takes overall yield and quality within the Very Early sector to a whole new level. Gema offers an early harvest but without paying significant overall yield penalties. Ideal for spreading harvest dates or producing more maize from marginal sites. The start of a new beginning for Very Early varieties!

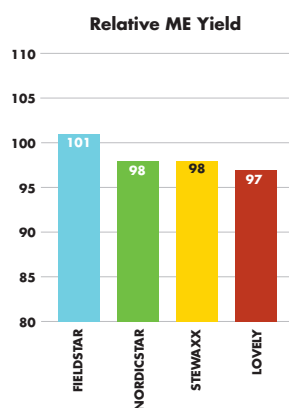
BREEDER'S COMMENTS

"New to the NIAB/BSPB 2022 list, with an FAO of 150 Gema is the earliest variety from the LG breeding programme, offering significant improvements in terms of agronomy, starch and yield to maize growers. Gema has good tolerance to diseases such as fusarium and eyespot and has excellent standing power."

FIELDSTAR



- + EARLY
- + FAO 180
- + 100% Relative DM yield
- + 18.1 Tonnes DM per Ha
- + 101% Relative starch yield
- + 6.13 Tonnes starch per Ha
- + 100% Relative ME yield
- + 212 GJ ME per Ha



AGRII'S COMMENTS

Fieldstar is one of the most consistent and reliable varieties that the UK market has had to offer. Producing high yields of top quality forage throughout the UK and sitting firm on the List, year in, year out, Fieldstar continually forms the backbone of many cropping plans. Highly proven for livestock, AD or grain maize, Fieldstar is both consistent and flexible.

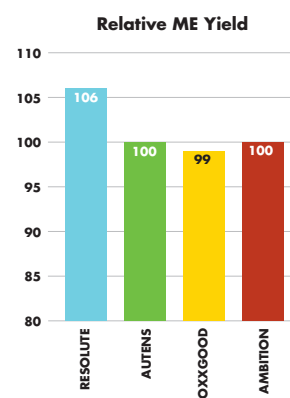
BREEDER'S COMMENTS

"There is no better example of the stable reliable performance of LG breeding than Fieldstar. Fieldstar is a robust and proven variety, still above average in terms of both quality, agronomics and yield."

RESOLUTE



- + EARLY
- + FAO 190
- + 105% Relative DM yield
- + 19.1 Tonnes DM per Ha
- + 105% Relative starch yield
- + 6.39 Tonnes starch per Ha
- + 106% Relative ME yield
- + 224 GJ ME per Ha



AGRII'S COMMENTS

Resolute offers the highest combined DM and ME yield of any variety on the 2022 Descriptive List. Resolute achieves an earlier harvest yet maintains massive overall yields when compared to much later material. UK maize production must adapt for ever changing futures and Resolute already holds many of the answers. The big hitting variety for any UK grower!

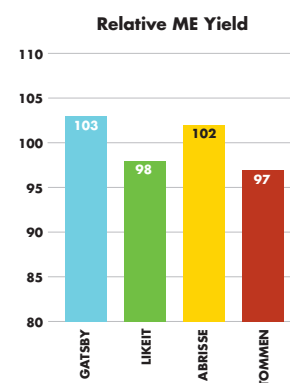
BREEDER'S COMMENTS

"The yield of Resolute is exceptional, the only variety to break the 19t/ha barrier. Not only does Resolute offer a significant improvement in terms of yield, it also maximises feed quality from an early maize harvest. A truly impressive performer both on paper and in the field."

GATSBY



- + EARLY
- + FAO 190
- + 103% Relative DM yield
- + 18.7 Tonnes DM per Ha
- + 100% Relative starch yield
- + 6.09 Tonnes starch per Ha
- + 103% Relative ME yield
- + 218 GJ ME per Ha



AGRII'S COMMENTS

Gatsby has proven itself to be a highly sought after variety by many UK growers. Exceptional overall yields combined with very high quality forage, have been the driving force behind Gatsby's continued popularity. Suitable for all sites across the UK, Gatsby is able to produce significant yields for AD and energy dense forage for livestock, while spreading harvest windows with its stay green capabilities. Without a doubt, the Great Gatsby!

BREEDER'S COMMENTS

"Slightly later than Fieldstar with an FAO of 190 but enjoying much the same performance. Gatsby is a robust performer and adaptable to many end uses, providing flexibility to harvest."

CASE STUDY: REDUCING THE ENVIRONMENTAL IMPACT OF MAIZE

New techniques are being used to grow maize more sustainably, but which will fit best into your system?

Ben Lowe, Agrii's National Forage Product Manager, considers the options...

Avoiding fields with bare soil over winter following maize harvest helps to reduce the environmental impact from growing the crop, and also improves the soil.

Later harvested maize with no following crop until the following spring, is not only likely to be harvested in poorer conditions thereby potentially damaging soils, but also risks erosion and nutrient loss from the field. With maize there are a number of ways to improve soil resilience, but each has its benefits and challenges.

GROW AN EARLY MATURING MAIZE VARIETY AND PLANT A FOLLOWING CROP AFTER HARVEST

A starting point for decision-making should be assessing how likely maize stubbles will be in a condition to establish a following crop, usually either short-term grass or forage rye, the day after harvest.

The development of early maturing, high yielding maize varieties makes it more possible than previously. There has been a switch into early maturing maize varieties, as growers realise systems need to change. Ideally, you want harvest to be completed by mid-October to maximise the chances of being able to travel.

Varieties such as Avitus KWS and Limagrain's Resolute are changing the perception that the highest yielding varieties are also later maturing. These varieties are pushing the boundaries. Yields are higher and you can harvest two to three weeks earlier.

Most will likely follow with forage rye. It can be sown with minimum cultivations provided the field is in good condition, rapidly establishes and doesn't really stop growing through the winter, so provides either early grazing in spring or can be ensiled mid to late April. It not only provides winter cover, mopping up nutrients, reducing erosion and helping improve soils, but also provides a forage crop that can be utilised on farm at home.

UNDERSOWN MAIZE

The biggest risk from not undersowing maize is a delayed harvest or wet period following harvest that prevents the following crop being established.

For grain maize growers, undersowing maize is realistically the only option as harvest is not until November, while producers for livestock and anaerobic digestion should think carefully about whether establishing cover after harvest is likely.

Ensuring ground is not left bare after maize can reduce its environmental impact



If there is a risk of not being able to establish cover after harvest, then all aspects of maize production need to be assessed before starting. That includes whether the ground is suitable for maize at all, as well as variety choice.

But undersowing maize, usually with grass, does provide a high level of assurance that you will have some winter cover following harvest. There are typically two options to establish the undersown crop – either plant it at the same time as the maize or around 4-6 weeks after maize drilling.

Planting at the same time as maize requires a specialist drill that can drill both maize and grass simultaneously.

The advantage is a reliable one-pass method for establishing the grass early, plus precise seed placement between the rows minimising competition with the maize crop.

Competition can still be a problem if grass establishes quickly, but the biggest challenge is weed control post-drilling as herbicides are likely to remove the cover.

The more common technique is to establish the grass once the maize reaches 6-8 leaf stage either by broadcasting with a fertiliser spreader or sowing with a pneumatic interrow disc coulters drill. Typically, interrow drilling costs £30-35/ha. Broadcasting is easiest, but establishment can be variable, while there can be the same issue about the availability of specialist drills. Usually, either festulolium, creeping red fescue or a perennial ryegrass is used.

You want something which is vigorous enough, but not over vigorous so it swamps the maize.

While a cut of silage could be taken in the following spring, these types of leys offer the opportunity for grazing by flying flocks of sheep. Grants from some water companies are available for undersowing grass to help cover the costs, which typically can be about £100/ha including drilling.

OTHER OPTIONS?

New Agrii trials will be comparing a hybrid approach of undersowing the maize with companion crops, which potentially could also be established with forage rye following harvest. Outside of grass, we are interested in whether a legume companion crop could benefit the maize crop while growing by fixing some nitrogen, either reducing inputs or increasing yields.

One example from 2020 showed a 5t/ha yield increase from a maize crop when clover was present as a companion crop. There's also the possibility of intercropping maize with something like beans, which in addition to fixing nitrogen might also add an extra protein source.

These trials will compare various companion crops, including beans, vetches and grass undersown with an interrow drill to investigate additional potential benefits.

Forage rye provides winter cover, mops up nutrients, reduces erosion and helps to improve soils.



NETWRAP, FILM & TWINE PRODUCTS

NETWRAP, FILM & TWINE PRODUCTS

SILAGE WRAP

FARMER'S SILOGRASS silage wrap is one of the most established in today's market and is suitable for round bale wrapping and big square bales in all conditions. These Silograss wraps are available in 3 and 5 layers.

Our **FARMER'S ECO PLUS** uses a slightly thinner, and yet equally strong film, which enables more bales per roll to be covered. This offers excellent value, therefore guaranteeing substantial cost savings over the harvest period to keep your farm as efficient as possible.

The high tack levels and film impermeability ensure weather proof bales that produce top quality silage consistently.



SILOGRASS SILAGE WRAP

- + High puncture resistance silage wrap
- + High tack levels ensures a perfect seal
- + Silage wrap for all climate capabilities
- + 5 Layer silage wrap

TYPE & CODE:

Black 750mm	SILOG001
Green 750mm	SILOG003

SILOGRASS PHYSICAL PROPERTIES:

Width:	500mm	750mm
Length per roll:	1,800m	1,500m
Reel weight:	22kg	27.5kg
Reels per pallet:	48 reels	40 reels
Thickness:	25mu	25mu



Agrii stocks a full range of Cotesi, Maxicover, Farm Films, Farmer's and Tama netwrap, film and twine products including the following:

BALER TWINE

TYPE & CODE:

Fine 22300ft	TWIN09
Medium 12000ft	TWIN06
Hay 10000ft	TWIN05
Big Bale 7200ft	TWIN12
Big Bale 8600ft	TWIN10



TAMA TWINE

- + Spools fit in all balers.
- + The only fully OEM validated Big Baler twine range.
- + Unrivalled consistency of fibrillation, twisting, suppleness and knotting performance.
- + Validated by leading knotter manufacturer RASSPE.

Tama LSB Long	TWIN58
Tama LSB Power	TWIN13



BALE NETWRAP

- + TamaNet™ Edge to Edge 4500m & 3600m (3600m currently comes with 200m extra free).
- + Bluebell Netwrap 3000m & 3600m.

TamaNet	TAMANET
Bluebell	TAMACOVE



NETWRAP

MAXICOVER HT CODE:

3000m 28 packs per pallet	NETWRAP
3600m 28 packs per pallet	NETWRAPS



FENCING & WIRE

TORNADO'S FENCING HERITAGE

Over the last 50 years, Tornado has become THE name in quality fencing across the agricultural, equestrian, forestry and infrastructure sectors.

They are the only fencing manufacturer to have evolved from a fence contracting business. They know what it takes to design, manufacture and install the perfect fence.

Their understanding of how a fence needs to perform, combined with meticulous attention to detail, allows them to create fencing that gives maximum protection for minimum lifetime costs.

TORUS LIVESTOCK FENCING

KNOT

Features

High-pressure bonded knot with continuous vertical stay wire.

Benefits

- + Smooth knot with no sharp edges.
- + Stronger than a hinge joint knot.



TITAN BARB WIRE

Tornado manufactures three specifications of barbed wire to suit various grades of use.

- + **High Tensile Titan barbed wire** is manufactured from 2.0mm high tensile wire.



- + **Standard barbed wire** is produced from 1.6mm wire.

- + **Mild steel barbed wire** is manufactured from 2.5mm mild steel wire.

The latter is generally used in conjunction with mild steel net fences.

CODE: TORNBAR

R8/80/22

The recommended sheep fence.

The standard 8/80 pattern with 22cm between the vertical stay wires.

The wider spacing helps prevent sheep from getting their heads trapped in the net.

CODE: TORN005



ELECTRIC FENCING



Gallagher is the largest quality brand for electric fences in the world, and offers a first-class product with a good price/quality ratio as well as first-class service.

The Gallagher products are developed from an agricultural perspective and are fully-tested by users. This means innovation by, and for, the product's ultimate user.

FENCE ENERGISER

Gallagher has the best solutions for supplying fences with power. Will you choose the I series, an intelligent energiser? Or a plug-and-play solution? Maybe a solar energiser with integrated solar panel is the one for you! Whatever you need, you will find the right, most reliable solution.

ELECTRIC FENCING INSULATORS

The range of Gallagher insulators closely matches the conducting wires on offer. There are insulators for tape, plastic rope and aluminium wire, with special attention for offset insulators to electrify existing fencing. To be fitted on wooden and/or steel posts, for permanent or mobile fencing. Distinctive in price, quality and durability.

ELECTRIC NETTING

Netting and kits are Gallagher's all-in-one systems. Adding an energiser is all that is needed to construct a well-functioning fence. Ideal for temporary, often shorter fences that need to be installed quickly.

CONDUCTING WIRES FOR ELECTRIC FENCE

Essential for an electric fence is the conducting wire as it conducts the current. Even though the conducting wires look alike, there are considerable differences in price and quality. In addition there are differences in use. The Gallagher range offers tape, rope, plastic wire, Equifence and high tensile. All different in conduction, durability and design. Choose the right conducting wire for your purpose.

ELECTRIC FENCE POSTS

Gallagher offers two post types: posts for temporary fencing and posts for permanent fencing. The permanent posts (Gallagher post, Eco post, Insultimber post and Insulated Line post) differ in quality, durability and price. On top of that, mobile posts in various types and sizes are available: plastic posts, fibreglass posts and steel posts. Every type has its own application. The Insulated Line Post can be used for permanent fencing, however, is easy to move as well.

AGRII SUPPLIES THE WHOLE OF THE GALLAGHER RANGE



BETACRAFT WORKWEAR

GEAR THAT WORKS AS HARD AS YOU DO, SO YOU CAN STAY OUTSIDE FOR LONGER.



BETACRAFT 9044 HURRICANE JACKET

The perfect New Zealand waterproof thermal coat for winter farming.

- + 20,000mm Waterproof rating – 5,000g/m² breathability with a breathable liner.
- + 3 Layer Tetratex PU coated, seam-sealed ripstop nylon outer with high abrasion resistance.
- + Fleece lined.
- + Drawstring hood.
- + Extra long drop tail back.
- + 2-Way zip with domed stormflap.
- + Generous storm-proof hip pockets.
- + Chest pocket.
- + Internal chest pocket.
- + Reflective piping on the chest and arms.
- + ISO Dry-cuff.

Code: **BETAC008**



BETACRAFT 9016 WATERPROOF OVERTROUSER

The perfect New Zealand waterproof trouser for all weather farming.

- + 20,000mm Waterproof rating.
- + 5,000 g/m² breathability with a breathable liner.
- + 3 Layer Tetratex PU coated, seam-sealed highly abrasion resistant ripstop nylon outer.
- + Buckle and belt adjustable waist.
- + Side access pocket openings.
- + Unique ISO cuff saver.
- + Shaped knees for greater flexibility.

Code: **BETAC002**

We stock a wide range of Betacraft clothing – please get in touch for more details of the full range.



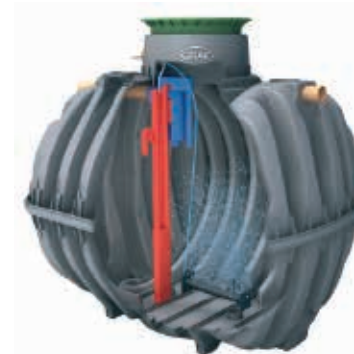
WATER STORAGE TANKS

Agrii can supply both potable and non-potable water tanks, rainwater harvest tanks and kits, fertiliser tanks and molasses tanks, ranging from 900 litres up to 30,000 litres.

We also supply sewage treatment plants, bunded oil tanks and fuel stations.

All tanks can be delivered direct to site, and we have a dedicated Tanks team on hand to answer any queries.

DELIVERED DIRECT TO YOU



TREATMENT PLANTS



RAINWATER HARVEST TANKS



OIL/DIESEL TANKS



FUEL POINTS/STATIONS



ABOVE GROUND WATER TANKS



BELOW GROUND WATER TANKS

FOR MORE INFORMATION, CONTACT:

Jackie 07866 139443
Liz 07593 382116
Paul 01642 588585

pipes@agrii.co.uk

www.agrii.co.uk/products-services/pipes-and-drainage/

Please request a copy of our DRAINAGE AND TANKS SUPPLIES CATALOGUES



PROTECTION OF WATER RESOURCES

Water is a key 'public good' listed under the Government's 25 Year Environment Plan. Responsible use of crop protection products, and reduced reliance on them, both have a key role to play in maintaining and improving water resource quality on and near our farms.

Climate change brings with it the likelihood of increased instances of extreme weather, including more occurrences of both drought and flooding events.

Improving the farm's general environmental resilience can help to reduce the impact that these more frequent severe weather events might have.

The introduction of rainwater harvesting systems is one way that the farm's vital water resources can be preserved.

They have the obvious draw of mains water savings for those with indoor cattle, pigs or poultry, but faster sprayer filling, fewer spray pump and line problems in hard water areas and no need for water conditioners, are now also providing additional arable attractions in the drive towards greater sustainability.

TOP TIPS IF YOU'RE CONSIDERING RAINWATER HARVESTING

- 1 Check on the availability of grants under Countryside Stewardship and the newly emerging ELMS;
- 2 Match tank capacity carefully to roof area and local rainfall;
- 3 Site tanks conveniently for both the buildings serving them and sprayer access;
- 4 Place above-ground tanks on a solid concrete;
- 5 Install good quality filters to intercept debris and help oxygenate the water;
- 6 Employ calmed inlets to prevent incoming water disturbing any sediment;
- 7 Leave enough space between the guttering and top of the tank for the filter; and,
- 8 Check what, if any, legislative requirements may be involved.

Agrii can help with all of the above – please get in touch. For more case studies and information on protection of water resources, please visit www.agrii.co.uk/greenhorizons

CASE STUDY

RAINWATER HARVESTING PAYS DIVIDENDS FOR ANGUS FARMER

At North Mains of Dun, harvesting rainwater with an Agrii system is saving David and Jenny Warden around a third of the annual mains water bill for their mixed arable, pig and soft fruit business.

Installed 10 years ago, the 10,000 litre above-ground tank system has already repaid the family's investment many times over and still has plenty of life left in it.

"Mains water is expensive," says David Warden. "Especially when you're fattening 3000 pigs a year, each drinking 6-7 litres a day and growing strawberries, blackberries, raspberries and blueberries.

"We have a 4 million gallon irrigation pond filled by natural offline water abstraction from our local watercourse for the fruit we grow as part of Angus Growers."

"Alongside this, capturing rainwater from our 800m² livestock shed roof is invaluable. With our pigs alone consuming over 1.5 million litres of water each year, we reckon it's saving us buying around a third of what we need."

"Harvesting water from the roof helps restrict the pressure intense rainfall puts on our farm drainage system," he adds.

"So, it's good for the environment as well as our business. Being as sustainable as possible in every way is essential for a small farm like ours. It's all about making the very most of every resource we have and wasting as little of anything as we can – most importantly the water we get free of charge."



CONSULTANCY SERVICES

The Agrii Consultancy and Environmental Services team provides challenging advice, strategic solutions and technical innovation to agriculture and the rural community – enabling individual businesses to prosper.

Some of the areas that the team provides support on, include:

- + Stewardship and capital grant applications
- + Environmental Land Management
- + Whole farm budgeting and business planning
- + Nutrient planning, including organic manures and Nitrate Vulnerable Zones

MEET THE TEAM

SIMON ROLLINSON
Agrii Farm
Business Consultant



"Farm strategy, fixed cost management, utilisation of labour and machinery, environmental land management, diversification – all of these factors affect the overall success of a farm business. It is for this reason that Agrii's Consultancy and Environmental Services team was formed – to bring an environmentally friendly, professional and profitable farm business to work alongside our agronomists and provide customers with a more complete profitable farm solution."

THE FUTURE OF ENVIRONMENTAL LAND MANAGEMENT SCHEMES (ELMS)

There are three new government schemes that will replace both the Basic Payment and Countryside Stewardship schemes.

These ELMS schemes are intended to support the rural economy by rewarding environmental land management whilst also achieving the goals of the Government's 25 Year Environment Plan.

- 1 THE SUSTAINABLE FARMING INCENTIVE
- 2 LOCAL NATURE RECOVERY
- 3 LANDSCAPE RECOVERY

These schemes are designed for farmers and other land managers to be paid for delivering 'public goods' such as:

- + Clean and plentiful water
- + Clean air
- + Thriving plants and wildlife
- + Protection from environmental hazards
- + Reduction of and adaptation to climate change
- + Beauty, heritage and engagement with the environment

You can find out more information on ELMS in Agrii's Green Horizons Insight Report 2: Enhancing the Environment available at www.agrii.co.uk/greenhorizons



UNLOCK YOUR SOIL'S POTENTIAL

Digital mapping and variable rate liming



Soil acidity	% of fertiliser utilised			% of total fertiliser wasted
	Nitrogen	Phosphate	Potash	
pH 5.0	53%	34%	52%	51%
pH 5.5	77%	48%	77%	29%
pH 6.0	89%	52%	100%	16%
pH 7.0	100%	100%	100%	0%

Source for '% of fertiliser utilised' figures – ALA

WHAT YOU GET AS PART OF THE SERVICE:

- + Access to RHIZA digital platform
- + Field mapping and management zones created
- + pH testing and upload to the RHIZA platform
- + Supply of quality ground lime with NV over 50
- + Variable rate application targeting problematic areas
- + Potential large savings over blanket applications
- + Delivered **and** spread service

WHY LIME?

- + Improved fertiliser utilisation
- + Improved soil structure
- + Acid-favouring weed prevention
- + Disease prevention
- + Higher yields
- + Inhibits transposition and movement of heavy metals
- + Increased microbial activity



For more information about the service please contact:

Email: r&tliming@agrii.co.uk **Telephone:** Amy Fewkes 07977 503387

RHIZA

PLANNING MADE SIMPLE

RHIZA. The only fully integrated digital agronomy and precision farming service for arable, grassland and high value crop businesses.

Our new **BASE** package, which is free of charge for Agrii customers, gives farmers access to these powerful digital tools to help you to grow your business.



Crop growth stage

We derive crop growth stage estimations from radar weather data and drilling dates. These tell us more information about the crop structure, like Leaf Area Index (LAI) and biomass.



Satellite imagery

We source satellite imagery to assess the crop biomass, health and performance. On higher packages, the imagery can be used for creation of management zones, and variable rate applications.



Weather data

We source satellite weather data accurate up to 1km² and provide you with decision making tools, such as when to drill based on soil moisture, or surface wind speed, to plan optimum spray windows.



Soil data

Soil information such as type, organic matter and calcium level are provided by Cranfield and James Hutton Institute. Integrate your farm's historical soil data onto the platform at any time.



Pest and disease forecasting

Our P&D models can be used to better plan applications. They are weather driven, providing granularity and forecasting at individual farm level.



Mobile scouting app

Our scouting app, Contour Mobile, enables quick access to in-field observations and satellite imagery, enabling targeted crop walking. Aid communication and joint decision making, by sharing findings with your agronomist.



If you would like more information, please speak to your Agrii contact to set up a meeting with the RHIZA team.

MORE RESOURCES



Agrii Finance

Agrii Finance is a competitive and flexible finance solution, giving you the flexibility to manage cashflow to suit your business needs.

Farmer-friendly Input Finance

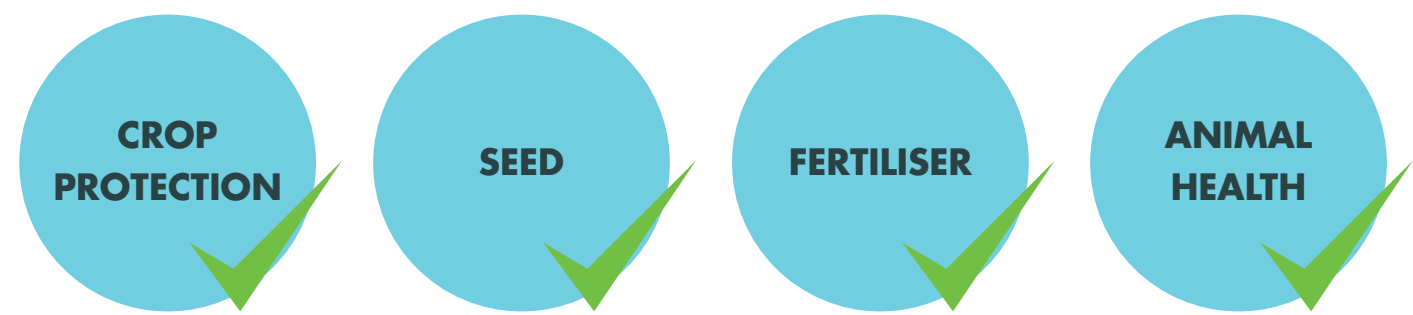
Agrii Finance is independent of grain transactions and you won't be committed to a particular input manufacturer.

It means you can make the best growing and marketing decisions for your crops without being constrained by cash availability.

We are permitted to act as a Credit Broker. We do not fund any credit contracts ourselves; all credit applications are introduced to our third-party lender De Lage Landen Leasing Limited (DLL).

- + Unsecured with a number of repayment schemes to match payments to your cashflow
- + Competitive fixed interest rates
- + Fast and efficient process
- + Exclusive to Agrii customers for ALL Agrii inputs
- + Minimum spend £3k
- + Subject to £60 lender documentation fee

CODE: AFM0009



Credit is subject to status and credit acceptance. All applicants must be 18 or over and credit is for business purposes only. Agrii is a trading name of Masstock Arable (UK) Limited who are authorised and regulated by FCA (FRN 710790). We are remunerated annually, by DLL, in the form of a volume rebate payment. The payment does not vary based on the Finance scheme you choose to take.

Registered postcode: GL54 4LZ

If you would like more information about Agrii Finance, please speak to your usual Agrii contact or call our Agrii Finance team who will be pleased to help...

Agrii Finance Team 01937 588095 or email af@agrii.co.uk



At Agrii, we believe that giving specific advice on increasing quality home grown forage is the key to maximising an individual livestock farm's productivity.

Our extensive knowledge of nutrient management, agrochemical inputs, grass seed mixture formulations and grassland management can all help build a resilient business and increase margins from forage in these uncertain times.



Whether you're growing maize under degradable film in the North West, AD feedstock in the East, silage for livestock in the South West or even maize for grain in the South East...

Agrii can supply the market leading technical advice and varieties you need!



As part of our whole farm offer, we supply a broad range of ancillary products designed to cover all needs.



Agrii can offer a comprehensive range of gamecover mixes which are designed specifically to suit the different types of birds on your shoot.



INSIGHT REPORT 1: Improving Soil Resilience
Provides more information on regenerative agriculture and integrating livestock into the rotation.



INSIGHT REPORT 2: Enhancing the Environment
Provides more information on the role of forage systems in reaching net zero and different management strategies to help achieve this.



INSIGHT REPORT 3: Integrated Whole Farm Solutions
Provides more information on the work Agrii is doing to support reduced use of crop protection chemistry in an IPM/IFM approach.



INSIGHT REPORT 4: Increasing Farm Productivity and Viability
Provides more information about the work and research Agrii is doing to maximise productivity in an environmentally sustainable way.



INSIGHT REPORT 5: Extending Stakeholder Engagement
Provides more information about the work that Agrii is doing to extend engagement with stakeholders at all stages of the agri-food chain.

To request your free e-copy or paper copy of any of the brochures detailed on this page, please contact your usual Agrii contact or email info@agrii.co.uk



Connect with Agrii

Via our agronomy and advisory teams

We have over 300 agronomists throughout the UK

At an Agrii iFarm Event

We have 28 iFarm and Technology Centre demonstration farms throughout the UK

ifarms TM

Online at agrii.co.uk

For the latest news, event information or to ask us a question

Follow us on social media



Speak to our Customer Services Team

With any queries on 0845 607 3322 or email info@agrii.co.uk

For further information...

Livestock product enquiries:

Ben Lowe	National Forage Product Manager	07966 533374	ben.lowe@agrii.co.uk
Emma Gatehouse	Livestock Products Manager	07966 664096	emma.gatehouse@agrii.co.uk

Please email livestock@agrii.co.uk with any general enquiries.

Local animal health centres:

Agrii Stockton	01642 588585
Agrii Ludlow	01584 872134
Agrii Presteigne	01544 260140
Agrii Knighton	01547 529073

Whilst every effort is made to ensure that the details supplied in this brochure are correct, Agrii cannot be held responsible for any misleading or inaccurate information. Current legislation must be checked before entering schemes. Agrii reserves the right to change varieties within the mixtures with a suitable replacement if required.

MEET THE TEAM



Emma Gatehouse
Livestock Product Manager



David Pryce
Animal Health Sales



Stuart Davies
Animal Health Sales



Ollie James
Animal Health Sales



Paul Glasper
Animal Health Sales



David Thornton
Feed and Nutrition Specialist



Ben Lowe
National Forage Product Manager



Rob Bowes
RHIZA Account Manager and Agronomist

