

ANCILLARY PRODUCTS CATALOGUE






Welcome

Agrii delivers advice, services and technology to UK farmers and horticulturists. As part of our offer we supply a range of ancillary products – this catalogue outlines the ranges that we provide and how you can get in contact to make your order. We hope you find it of use.

HOW TO ORDER

You can order ancillary products through your usual Agrii contact or by calling our Customer Services Team on the number below:

 0845 607 3322

 horticultureorders@agrii.co.uk

 www.agrii.co.uk/products-services/ancillary-products

Contents

SAFETY EQUIPMENT	4-5
CHEMICAL STORAGE	6-7
FERTILISERS	8-11
Soluble fertilisers	12-17
Trace element fertilisers	18
GROWING MEDIA	19-23
POTS & LABELS	24
PACKAGING	25
CROP COVERS	26-35
AMENITY MIXTURES	36-37
VINEYARD PRODUCTS	38-46
Tree Ties	41
Pruning Equipment	42-44
Picking Buckets	44
BIOLOGICAL CONTROL	47-48
POLLINATION AGENTS	49
TWINES/NETWRAP	50
SILAGE WRAP	51
RHIZA CONNECT	52
AGRII WEATHER STATIONS	53
GREEN HORIZONS	54-55

Please note, the products within this catalogue do not depict the full ranges.

Force 8 Mask and Filters

- + Press-to-check filters with hinge design to facilitate instant and accurate checking of the face fit, without affecting the seal of the mask to the face.
- + Easily attaches to the Force 8 Respirator (Code: 1863F) with a secure fit when applied.

Mask Code:

FORCE8M

Filters Code:

FORCE58FP



Face Shield Perfo Nova 82044

Code:

NORTH1



Betafit Disposable Mask FFP2V

(BOX OF 10)

Code:

BETAFIT2



Hooded Coverall – Liquid and Particle Protection

- + Durable SMS breathable fabric with additional treatment for increased protection against water-based chemical splash.
- + Low lint fabric and internal seams to reduce the risk of fibre contamination.
- + Two way zip for quick and easy access to work clothes.
- + Strong triple-stitched seams.
- + CE type 5 and 6.

Colour:

White

Size & Code:

M	COVERA
L	COVERA002
XL	COVERA001
XXL	COVERA003
XXXL	COVERA004



Chemical Resistant Apron

Colour:

Green

Code:

APRON



Nitrile Gloves

Size & Code:

S	GLOV22
M	GLOV23
XL	GLOV24



Gloves Latex Powder Free

(100 PACK)

Size & Code:

M	GLOV14
L	GLOV15
XL	GLOV16



The 2000 Series

Designed and built to comply with future international safety standards. In addition, special focus has been put on operator comfort, safety and modern design. With only few and very easily repairable wearing parts along with the very ergonomic design, the 2000 series will prove to be the model sprayer of the future.

The 2000 Series offers you:

- + Chemical resistant shoulder pads for safety and comfort, together with a waist belt to spread the load.
- + Service kits, nozzle packs and spare parts available.
- + Ergonomic handle with storage facility for extra nozzles, filters and other accessories.
- + Large filler hole and deep strainer to prevent splash back to strainers/filters to clean impurities before nozzle outlet.
- + High resistance GRP Lance adaptable for all types of nozzles.
- + Ergonomic, robust and lightweight design.
- + Left/right hand operation.
- + Wide range of accessories.
- + All parts easily repairable without the use of tool.



Size & Code:

CP3 20lts	KNAPSA0002
CP5 5lts	KNAP17
CP15 15lts	KNAP16

Spill Kit

Contains:

- 25 x Pads 40 x 52cm
- 4 x Sock 125 x 7.5cm
- 2 x Cushions 42 x 37 x 10cm
- 1 x Dammit slab
- 1 x Disposable bag and tie
- 1 x Gloves and goggles

Code:

CSK1



E-EPS5 – 1840/CS5 Storage for chemicals, hinged & lockable

- + Size 1410mm x 810mm x 1580mm (L x D x H).
- + Manufactured from 2mm Mild Steel Sheet over 50mm x 50mm x 3mm RHS tube.
- + Designed to comply with the Control of Pollution (Oil Storage) (England) Regulations and current Environmental and Health & Safety legislation.
- + Flame Arrested high and low ventilation in doors.
- + To hold 16 x 25 litre drums on two levels.
- + Hinged double doors with two point locking mechanism.
- + Fully seam welded leak-proof sump.
- + Sump capacity 250 litres.
- + One removable shelf.
- + Finished in chemical/corrosion resistant paint to a depth of at least 100 microns.

Code: **CHEM3**



E-EPS4 – 1840/CS4 Storage for chemicals, sliding doors – 3 shelves for 25ltr & 5ltr containers

- + Size 2500mm x 800mm x 2400mm (L x D x H).
- + Manufactured from 2mm Mild Steel Sheet over 50mm x 50mm x 3mm RHS tube.
- + Designed to comply with the Control of Pollution (Oil Storage) (England) Regulations and current Environmental and Health & Safety legislation.
- + Flame Arrested high and low ventilation.
- + To hold 48 x 25 litre drums on two levels.
- + Padlockable sliding doors.
- + Galvanised roof with galvanised guttering, designed to lift off in the event of an explosion, in compliance with HSG51.
- + Fully seam welded leak-proof sump.
- + Sump capacity 380 litres.
- + Two fixed shelves and galvanised grid flooring.
- + Finished in chemical/corrosion resistant paint to a depth of at least 100 microns.

Code: CHEM2



E-EPS3 – 1840/CS3 Storage for chemicals, sliding doors – 4 shelves for 25ltr & 5ltr containers

- + Size 3000mm x 1650mm x 2400mm (L x D x H).
- + Manufactured from 2mm Mild Steel Sheet over 50mm x 50mm x 3mm RHS tube.
- + Designed to comply with the Control of Pollution (Oil Storage) (England) Regulations and current Environmental and Health & Safety legislation.
- + Flame Arrested high and low ventilation.
- + Designed to contain 80 x 25 litre drums or a combination of other small containers.
- + Padlockable sliding doors.
- + Galvanised roof with galvanised guttering, designed to lift off in the event of an explosion, in compliance with HSG51.
- + Fully seam welded leak-proof sump.
- + Sump capacity 880 litres.
- + Three fixed shelves and galvanised grid flooring.
- + Finished in chemical/corrosion resistant paint to a depth of at least 100 microns.

Code: CHEM4



Agroblen 15+9+9 (12-14 months)

Agroblen Total 15-9-9+3MgO is a coated, NPK controlled release fertiliser. The continuous supply of nutrients, lasting 12-14 months, creates a fantastic uniform crop growth. This Agroblen product fits into re-plantation programmes and is safe to use in early crop stages (with low EC rates).

Size & Code:
25kg
ARGOBI



Sportsmaster Renovator Pro10+2+4

New Sportsmaster Renovator Pro is the triple action fertiliser from Scotts. As well as providing essential nutrients to promote growth and improve colour, it contains two selective herbicides for routine and heavy weed control. In addition, it contains iron for the control of moss and rapid green-up of the turf.

Application rate: 35g/m²

Size & Code:
25kg
RENOPRO25KG



Sportsmaster Spring & Summer 9-7-7

Sportsmaster Spring & Summer is an all-rounder that breaks down quickly to give rapid uptake of nutrients. For use any time between the beginning of spring and end of summer.

Application rate: 35 - 70g/m²

Size & Code:
25kg
SCOTTS97725KG

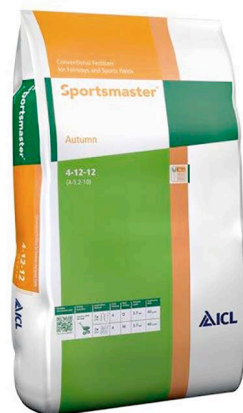


Sportsmaster Autumn & Winter 4-12-12

Sportsmaster Autumn is ideally used to strengthen turf in autumn, or when turf needs pre-stress conditioning.

Application rate: 35 - 70g/m²

Size & Code:
25kg
SPORTSAUT



Osmocote Pro

A second-generation coated fertiliser with controlled release. Fully coated NPK and trace elements. Osmocote Pro features orange/white colour coded granules for easy recognition.

2/3 Month

25kg **OSMOC17**

3/4 Month

19-9-10+2MgO+TE

25kg **OSMOCO017**

5/6 Month

19-9-10+2MgO+TE

5g tablet **OSMOC12**

7.5g tablet **OSMOC13**

25kg **OSMOCO016**

8/9 Month

18-9-10+2MgO+TE

25kg **OSMOCO019**

12/14 Month

25kg **OSMOCO018**



YARA PG Mix

12+14+24

PG MIX 12-14-24 is an all-in-one powdered compound fertiliser for potting soils which converts ordinary peat into high standard potting soil.

PG Mix removes the burden of mixing straights and provides even distribution of nutrients in the potting medium.

Size & Code:

25kg
PGMIX



Osmocote Topdress

22-5-6+2MgO+TE

Osmocote Topdress FT is a coated fertiliser that is specially developed for top-dress applications in container nursery stock.

It contains Fusion Technology: a special component that makes the product stick onto the growing medium after application. This means no granules are lost if the pots are blown over.

Size & Code:

25kg
OSMOCO10



Sulphate of Potash

Plant food to promote fruit and flowers.

- + **Size:** 25kg
- + **Area treated:** 714m², 29m²
- + **Nutrients:** NPK 0-0-48
- + **Recommended uses:**
Flowers, fruit bushes and trees
- + **Feeding recommendations:**
Base dressing 35g/m²
- + **Advice:** Keep off leaves and stems

Code:
SOP25KG

Sulphate of Iron

Plant food for lime-hating (ericaceous) plants.

- + **Size:** 25kg
- + **Area treated:** 714m², 29m²
- + **Nutrients:** Iron (Fe) 19%
- + **Recommended uses:** Moss control

Code:
FERRSULP25KG

Lawn Sand

The traditional treatment to control moss.

- + **Sizes:** 185m², 75m²
- + **Active ingredients:** NPK 5-0-0 + Ferrous Sulphate
- + **Feeding recommendations:**
Anytime between late spring and early autumn
- + **Application rate:** 135gms/m²
- + **Advice:** Do not apply on wet or damp grass or in frost or drought conditions

Code:
LAWNSA001



YaraBela PRILLED N (34.5% N)

A quality prilled ammonium nitrate fertiliser suitable for use on all crops.

YaraBela PRILLED N contains nitrogen as both nitrate and ammonium. Plants require nitrogen in the ammonium and nitrate forms, so by applying these forms the nutrients are immediately available for plant growth. Nitrates are the most efficient form of nitrogen and are key to achieving optimum yields.

YaraBela PRILLED N is a homogeneous, uniform sized, prilled fertiliser for even spreading over wide bout widths.

Available in England, Wales and Scotland.

Nitrogen Fertiliser
34.5% prilled in
600kg bags
(Min order of 3000kg)

Code:
NITR4



Fertiliser (20-10-10)

Uniform prilled compound fertiliser for Sportsfield application and general fertiliser for spring and summer.

Size & Code:

25kg bags

201010A

Urea Phosphate

The highest solubility rate compared to other phosphate sources. Dissolves very fast and is a very efficient acidifier.

Urea Phosphate can reduce water hardness, helps keep nozzles and dripper clean and free from clogging, can also be used as an alternative to acids. Helps to increase the availability of micronutrients in high pH conditions. Reduced N volatilisation with use of **Urea Phosphate**.

Code:

UREAPHOS25DK

Bonemeal, Fish, Blood & Bone and Garden Lime

Ideal for breaking down heavy clay soils to improve drainage and promote strong root growth. It also counteracts high soil acidity to encourage healthy plant growth and enables a wider range of plants to grow successfully.

- + Use as a late autumn or winter application onto frost-free beds, borders and vegetable plot soil.
- + Reduces soil acidity.
- + Improves drainage.
- + Promotes strong root.
- + Soluble fertilisers growth.

Code:

Bonemeal

BONEME

Fish, Blood & Bone

FISHBL

Garden Lime

GARDEN





Calcium Nitrate

CalciNit is a fully water-soluble nitrogen and calcium fertiliser. It is a free flowing, fine granular material which dissolves quickly in water without any residues.

CalciNit is suited to application through all fertigation systems – drip systems, low throw sprinklers, centre pivots and spray units.

Size & Code:

25kg bags
CALN2



Krista-MAG

A fully water-soluble nitrogen and magnesium fertiliser. It is a free flowing, fine crystalline powder which dissolves quickly in water without any residues. **Krista-MAG** is suited to application through all fertigation systems – hydroponics, drip systems, low throw sprinklers, centre pivots and spray units.

Code:

MAGNNITR25KG



Krista-MAP

A fully water-soluble nitrogen and phosphorous fertiliser. It is a free flowing, fine crystalline powder which dissolves quickly in water without any residues. **Krista-MAP** is suited to application through all fertigation systems – drip systems, low throw sprinklers, centre pivots and spray units.

Code:

MAPHORT25



Krista MgS

A fully water-soluble sulphur and magnesium fertiliser. It is a free flowing, fine crystalline powder which dissolves quickly in water without any residues. **Krista MgS** is suited to application through all fertigation systems – drip systems, low throw sprinklers, centre pivots and spray units.

Code:

EPSOTOP25KG



Krista-SOP

Suitable for fertigation and is ideal where high potassium levels are required without additional nitrogen. It is suitable for crops with a high sulphur demand. It has very low chloride content and is highly soluble and dissolves very quickly.

Code:
POTC1



Krista-MKP

A clean, fully water-soluble phosphorus and potassium fertiliser, particularly suited to a wide range of horticultural crops. It's a free flowing, fine crystalline powder dissolving quickly in water. **Krista-MKP** is suited to application through all fertigation systems – hydroponics, drip systems, low throw sprinklers, centre pivots, spray units, misters.

Code:
MONOPO



Paddock Royale (12-11-18)

A compound prilled fertiliser for horse and pony pastures. Balanced nutrients for plant and animal growth. Easy to handle 25kg bag. Accurate to apply compound fertiliser. All the elements in every prill for accurate application.

Size & Code:
25kg bags
PADDOCKR



Calsal
(Liquid Calcium Nitrate)

- Benefits:**
- + Calsal is a liquid calcium nitrate fertiliser.
 - + Suited to application through all fertigation systems.
 - + All nitrogen in the nitrate form.
 - + Less than 0.002% NH₄-N.

Compatibility: Calsal can be mixed with all water-soluble fertilisers except stock solutions containing either sulphate or phosphate.

Size & Code:
1000 litre non-returnable
IBC **CALN6**

Krista-Urea

A fully water-soluble urea nitrogen fertiliser. It is a free flowing white prill, which dissolves quickly in water without any residues.

Code:

UREAKEMI25KG

Krista K

A fully water-soluble nitrogen and potassium fertiliser. It is a free flowing, fine crystalline powder which dissolves quickly in water without any residues.

Krista K is suited to application through all fertigation systems – drip systems, low throw sprinklers, centre pivots and spray units.

Code:

POTNIT25KG

Water-soluble NPK fertilisers – Poly-Feed™ (N, P, K, Mg, S)

Poly-Feed™ offers a range of fully water-soluble NPK fertilisers designed to provide complete plant nutrition throughout the growth season.

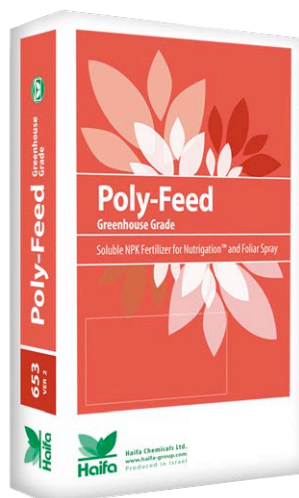
A wide choice of formulas and compositions that meet the needs of vegetable crops, fruits and flowers of all cropping system types.

Benefits:

- + Fully water-soluble, safe for use with all irrigation and spraying systems.
- + Consist exclusively of pure plant nutrients.
- + Free of chloride, sodium and other detrimental elements.
- + Made of high quality ingredients.
- + Enriched with high levels of micronutrients.
- + Unique with Multi-K® Reci.
- + Extremely low sodium content.
- + Solutions for hard and soft water.
- + Highly concentrated formula.

Code:

POLYFEEDSF



Kristalon (Water-soluble NPK fertilisers for liquid feeding)

Benefits:

- + Contain a full range of chelated trace elements.
- + Ideal for all irrigation systems, drip, tape, sprinkler and pivot systems.

Pack Size:

25kg. Polythene non slip bags.

Code:

Kristalon Lilac 20-8-8	KRISTAL
Kristalon Blue 19-6-20	KRISTABL
Kristalon Orange 6-12-36	KRISTAO
Kristalon Green 18-18-18	KRISTAG
Kristalon White 15-5-30	KRISTAW
Kristalon Brown 3-11-38+TE	KRISTABR
Kristalon Scarlet 7.5-12-36+TE	KRISSC
Kristalon Red 12-12-36+TE	KRISRED25KG
Kristalon Yellow 13-40-13	KRISTALONY

Amnitra L (Liquid Ammonium Nitrate)

Benefits:

- + **Amnitra L** is a liquid nitrogen fertiliser.
- + Suited to application through all fertigation drip systems.
- + Safe to handle, non-hazardous liquid ammonium nitrate.

Compatibility:

Can be used in combination with Calcinit, Magnitra L / Krista-Mag.



Size & Code:

20 litre cans (24.8kg) **NITR8**

1000 litre non-returnable IBC **NITR9**

Solinure 3 Extra K
12-5-36+2MgO+TE

The Solinure water-soluble fertiliser range is designed for fruit and vegetables that are grown in field or glasshouse environments. An extra boost of magnesium and trace elements aiding improved performance from your crop.

Benefits

- + Perfect for soil, glasshouses and tunnel systems.
- + **Solinure Extra K** is especially recommended to be used from fruit set and during fruit development.
- + No chloride, contains low level of urea.
- + Full trace element package, includes MgO.



Size & Code:

25kg **SOLINGT325KG**

Nova

Effective and convenient!

Produced for professionals in fertigation and foliar application, the Nova specialty fertilisers are of unrivalled quality and are highly soluble. They can be mixed with other straight fertiliser products or compound water-soluble fertigation fertilisers, such as Agrolution pHLow, Agrolution Special and Solinure.

Benefits of Nova:

- + Broad, complementary portfolio of straight fertilisers.
- + Highly concentrated soluble fertilisers.
- + High purity.
- + Low salt index.
- + Consistent quality.

Nova PeKacid

(0-60-20) is a solid phosphoric acid enriched with potassium. It is a patented water-soluble PK fertiliser that can be used successfully in hard water conditions. This white fertiliser is sodium-free and chloride-free, and extremely soluble at 670g/litre of water (at 20°C).

Due to its high acidity it helps to keep drippers clean. Its high acidity also means **Nova PeKacid** can be tank-mixed with calcium and magnesium carriers, despite its high levels of phosphorus.



Code:
PEKACID25KG

Nova Peak

(MKP 0-52-34, monopotassium phosphate) is produced by the largest manufacturer of MKP worldwide; ICL. It is a high purity product, totally soluble in water and fast dissolving. It is the most concentrated straight fertiliser containing phosphorus.

Nova Peak has a very low sodium content and is thus suitable for recycling systems.



Code:
MONOPO

Nova MAP

(12-61-0, mono-ammonium phosphate) is the ideal starter fertiliser of all crops, immediately before and after seeding and planting.

Nova MAP is a crystalline powder, free of chloride and sodium.

It is ideal for increasing the availability of soil phosphorus, especially in calcareous soils.



Code:
MAPHORT25KG

Nova Ferti-K

(0-0-61, potassium chloride) is the ideal product for chloride-tolerant crops. It is the richest, and yet the cheapest, potassium fertiliser. It improves fruit colour, sweetness and oil content. Along with potassium, chloride plays an important role in controlling general osmotic pressure within plant cells.

It is directly involved in the regulation of leaf stomata to open or close.



Code:
POTC2

Nova N-K

(13.5-0-46, potassium nitrate) provides a highly efficient source of nitrogen and potassium, and dissolves quickly in water. **Nova N-K** contains nitrogen in nitrate form which is easily taken up by the plants.



Code:
POTNIT25KG

Nova Calcium

(15.5-0-0+26.5CaO, calcium nitrate) is the most indispensable fertiliser in hydroponics.

Nova Calcium dissolves quickly and easily in water. The product mainly contains nitrate nitrogen, which is immediately taken up by plants. Calcium is important to improve the quality and the shelf life of the final produce.



Code:
CALN2

Nova SOP

(0-0-50+43SO₃, potassium sulphate) is the ideal fertiliser for crops with high potassium and sulphur demands. **Nova SOP** is nitrogen-free, which makes this product suitable for use when nitrogen should be reduced (e.g. at fruit ripening stage), maintaining the right N:K ratio for this stage. The low salt index makes Nova SOP reliable in various soil types.



Code:
POTCI

Nova Mag-S

(0-0-0+16MgO+32SO₃, magnesium sulphate) contains important nutrients for plant growth: magnesium plays a key role in photosynthesis, and sulphur is an indispensable element in amino acids synthesis.



Code:
MAGNSULP25KG

Nova Mag-N

(11-0-0+15.4MgO, magnesium nitrate) contains important nutrients for plant growth: nitrate nitrogen which is immediately available to the plants, and magnesium which is important for photosynthesis.

Magnesium is one of the nutrients with high mobility in the plant and should be applied continuously throughout the entire growth period.

Typical deficiency symptoms will first appear on old leaves.



Code:
MAGNITR25KG

Trace Element Fertilisers

TYPE	%	SIZE	CODE
Zinc Sulphate	23.6% Zn	25kg	ZINCSULPH25KG
Manganese Sulphate	32% Mn	25kg	MANGSULPH32%25KG
Copper Sulphate	25% Cu	25kg	COPPERSUL25
Sodium Molybdate	39.5% Mo	1kg Pack	SODIUMMOL
Ammonium Sulphate (soluble)	21% N	25kg	SULP1
Boron 21%	Soluble	20kg	BORON25
Agrii Soft Fruit TE Peat Mix	10kg	10kg	SOL13
Agrii Soft Fruit TE Coir Mix	10kg	10kg	SOL12A
Iron EDTA	13.2% Fe	13.2% Fe	IRON1
Iron EDDHA	7% Fe	7% Fe	IRON5
Iron DTPA	7% Fe	7% Fe	IRON6
Iron EDDHA	6% Fe	6% Fe	IRON7

Types of Substrate

Both the bag and its contents are thoroughly tested. It is no coincidence that Dutch Plantin is the first producer to receive a RHP label on buffered growbags. A big advantage of these growbags is that you are always assured of the correct output and size.

Because of different climates and cultures, client demands are often varied. Dutch Plantin helps to find the right substrate for your culture and your climate.

To serve the grower, there are two types of substrate used in the Dutch Plantin growbag. First there is the growbag with 100% Coco-pith. This growbag is used for longer cultures (like roses) and also in warm climates where you find much evaporation. For shorter cultures and in cooler climates, a more coarse medium is often used. This Optima growbag contains fine Coco-chips, and for that reason has a higher air content and more drainage.

The plastic which is used for the growbags is UV resistant, which is very important in warmer countries and when growbags are used for more than one year.



Dutch Plantin Growbags

- + Contain a consistent growing medium.
- + Available in different structures;
 - The standard growbags contain 100% Coco-pith.
 - The Optima growbags contain fine Coco-chips.
- + Can be produced with plant holes.
- + Can be produced in different sizes.
- + Have a high UV resistance.
- + Are easy to handle.
- + Are available with washed, as well as buffered, coco.
- + Are delivered on pallets.

Coco-pith

Coco-pith is a growing medium which has been in use for many years. Its popularity is due to the remarkable good characteristics:

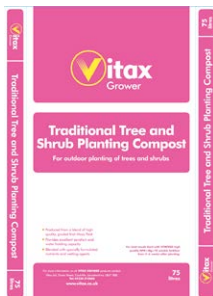
- + Coco-pith has a naturally high air-porosity.
- + Coco-pith absorbs water easily.
- + Coco-pith is a stable material.
- + Coco-pith is a 100% organic material.
- + Coco-pith is easy to handle.
- + Coco-pith can be transported in compressed form in different shapes.
- + Coco-pith is a growing medium with proven experience.

Vitax Traditional Tree and Shrub Compost

Size & Code:

75L

VITAXTS75L



Vitax Q4

5.3 - 7.5 - 10.0 + 3 MgO + trace elements.
A fertiliser suitable for many crops providing all the nutrients required for vigorous growth, abundant flowering and ripening of fruit.

Size & Code:

75L

VITAXQ4

Levington Composts

Size & Code:

F1 75L

F1LEV75L

M2 75L

M2LEV75L

M3 75L

M3LEV75L



Traditional Pot and Bedding Compost

An all peat compost suitable for growing plants in pots and trays, hanging baskets and tubs.

Size & Code:

75L

VITAX75L



Humax Multi-Purpose Compost

Code:

HUMAX75L



Sinclair Composts

Size: 75L

Code:

All Purpose

SHLALL75

Potting

SHLPOT75

Modular Seed

SHLSEE75

Medium-Coarse Potting **SHLPOTM**

Container

SHLCON75

Alpine, Herbaceous

SHLALP75

New Horizon Pro

SHLNEWH50L



John Innes 1-3

Size & Code:

No 1 28L **JOHNINNO1**

No 2 28L **JOHNINNO2**

No 3 28L **JOHNINNO3**



Fine and Medium Vermiculite

Size & Code:

Fine 100L **VERMFI**

Medium 100L **VERMME**

Perlite

Size & Code:

100L **PERLITE**

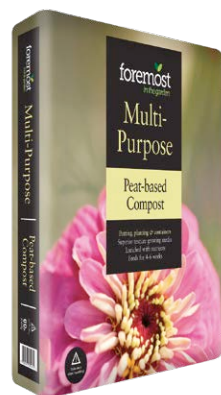


Multi-Purpose Compost

Size & Code:

60L

SHLFORMP60

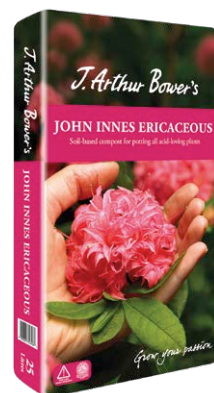


John Innes Ericaceous

Size & Code:

25L

JOHNERIC



Grow Bag

The Bulrush Grow Bag is enriched with Forest Gold and provides vital nutrients for growing vegetables, fruits, salads and herbs.

Size & Code:

33L

BULGRO

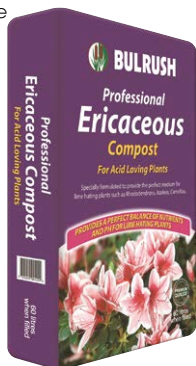


Ericaceous Compost

This compost is specially formulated to provide the correct pH balance for acid-loving plants such as Rhododendrons, Azaleas and Camellias.

Size & Code:

60L
BULFG60



Decorative Bark Chips

Larger size bark chips made from entirely renewable resources. FSC® approved. Use as a decorative mulch for beds and borders, suppression of weeds and moisture retention.

Size & Code:

70L
BULDEC70



Bulrush Multipurpose Peat Free

100% peat free. Made from sustainable materials including Forest Gold, composted bark and clay, ensuring excellent aeration and drainage. A proven performer for use all around the garden.

Size & Code:

40L
BULPF40



Multi-Purpose Compost

Our multi-purpose compost is enhanced with the innovative ingredient, Forest Gold, combined with essential nutrients and trace elements, to create a premium product.

Size & Code:

60L
BULMP60

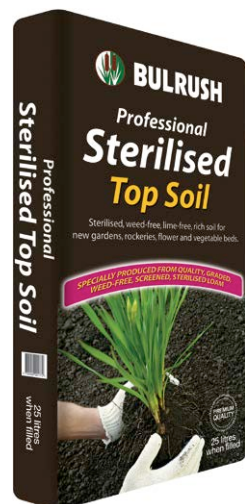


Sterilised Top Soil

Bulrush sterilised top soil is carefully selected and graded to be lime-free and weed-free. Perfect for creating new beds and borders, replacing old soil, levelling lawns or making compost.

Size & Code:

25L
BULTOP



PP Thermoformed – Desch range

Other sizes are available on request

DESCRIPTION	DIAMETER (CM)	HEIGHT (CM)	VOLUME (ML)	QTY/CASE
9cm	9.0	7.0	300	2448
9cm H	9.0	8.8	360	2340
10.5cm L	10.5	7.8	465	1550

Container Pots Injection Moulded – Y Base

DESCRIPTION	DIAMETER (MM)	HEIGHT (MM)	VOLUME (LTR)	QTY/CASE
1LY	130	106	1.0	420
1.5LY	150	121	1.5	88
2LY	163	133	2.0	96
3LY	180	149	3.0	86
4LY	210	165	4.0	78
5LY	230	174	5.0	78
7.5LY	258	204	7.5	74

Injection Moulded – T-range Containers

DESCRIPTION	DIAMETER (MM)	HEIGHT (MM)	VOLUME (LTR)	QTY/CASE
28T	283	224	10.0	58
32T	320	257	15.0	25
38T	375	257	20.0	25

7L Pots with Legs**Size & Code:** 2000 **POTS7LLEGS****Labels**

Description	Size	Writing Area	Colour	Pack Size	Code
4" Labels	10cm	10 x 1.4cm	White	1000	LABL4
5" Labels	12.5cm	12.5 x 1.4cm	White	1000	LABL5
6" Labels	15cm	15 x 1.7cm	White	1000	LABL6
Loop Lock Labels	16cm	11 x 1.6cm	White	1000	LABFLEXI
T Bed Labels	20cm	8 x 5cm	White	Singles	BEDSL200
T Bed Labels	24cm	10 x 6cm	White	Singles	BEDSL250
Angled Bed Labels	27cm	13 x 8 cm	White	Singles	BEDSL275
Angled Bed Labels	38cm	10 x 6cm	White/Blue	Singles	BEDSL400
Angled Bed Labels	53cm	16 x 10cm	White/Yellow	Singles	BEDSL500

Black Marker Pens (Fine Tipped)**Size & Code:** Single **MARKER**

Potato Sacks

Size & Code:

Paper Sacks Stock Print 12.5kgs **PAP12.5**

Paper Sacks Stock Print 25kg **PAP25**



Punnets

Size & Code:

Punnet F250 1/2lb Clear **PUNF250**

Punnet Lid T250 Clear **PUNT250**

Punnet F500 Clear 58mm Deep **PUNF500**

Punnet Lid F500 25mm **PUNT500**



Produce Boxes & Trays

Size & Code:

Produce Trays (ASSI) **PRODUCE**

Boxes 30lb Open Apple (Units of 10) **BOX19A**

F-Lock Pop up Tray 400 x 300 x 130 **BOX17A**



Nets

Size & Code:

Sprout Nets Green 10kg 46 x 59cm **NETSPRO100**

White Nets 12.5kg 46 x 59cm **NETPAR100**

Cabbage Nets 50 x 80cm Green **NETCAB100**





Gro-Fleece Products

Gro-Fleece Non-Woven

Specialist Features:

- › **Lightweight**, gently protecting without crushing delicate shoots and new growth.
- › **UV stabilised structure** to withstand UV degradation throughout the season.
- › **High translucence** with excellent air and moisture permeability.
- › **Protection** against light frosts whilst raising soil temperature by several degrees.
- › **Bird and game damage** to the crop can be dramatically reduced.
- › **Specialist production** runs available on request.

Gro-Fleece Standard

Gro-Fleece Re-enforced Edge

Gro-Fleece Ultimate

Gro-Fleece 19g/m²

Gro-Fleece 23g/m²

Gro-Fleece 30g/m²

Gro-Fleece Sizes

Fleece sizes + bespoke sizes available

WIDTH (M)	WIDTH (M)	WIDTH (M)	WIDTH (M)
1.05	6.40	11.50	19.00
1.60	6.90	12.00	20.50
2.15	7.40	12.80	22.00
3.20	8.00	13.80	24.00
4.25	8.50	14.20	25.50
4.80	9.60	14.80	27.00
5.30	10.50	16.00	28.50
5.80	11.00	17.50	Standard 250m rolls

Specialist Narrow Re-enforced Edge sizes + bespoke sizes available

WIDTH (M)	LENGTH (M)	LENGTH (M)
2.00	500	1000
2.10	500	1000
2.20	500	1000



Gro-Tunnel

Tunnel	Product	Product Info	Dimensions
Gro-Tunnel Type 1	Three season UV stabilisation	150 micron density with UV and EVA additives to help maintain elasticity for long-term performance. Designed specifically for frequent cover and removal.	Widths: 8.2m, 9.2m, 9.7m, 10.2m, 11.2m. Length: 800m
Gro-Tunnel Type 2	Four season UV stabilisation permanent cover	Manufactured in 180-200 micron density with UV and EVA additives, combating UV degradation.	Widths: 7.3m, 9.2m, 11.1m, 14m. Length: 600-800m
Gro-Tunnel Type 3	Four season UV stabilisation permanent cover thermic anti-fog	Manufactured in 180-200 micron density with UV and EVA additives, combating UV degradation.	Widths: 7.3m, 9.2m, 11.1m, 14m. Length: 600-800m

The tunnels mentioned above are examples, other styles and sizes are available on request. Manufactured to order for reasonable size quantities.





Gro-Tunnel Mini Tunnel

Green asparagus film

- › Clear film, mostly used in the UK.

50mu

- › 1.6m wide x 400m rolls or 1500m rolls.
- › Weight 90g per linear metre approx.
- › 23,000 running metres minimum.
58 rolls of 400m or 16 rolls of 1500m.

100mu

- › 1.6m wide x 300m rolls or 1250m rolls.
- › Weight 177g per linear metre approx.
- › 12,000 running metres minimum.
40 rolls of 300m or 10 rolls of 1250m.

White asparagus film

- › Clear film, mostly used in Europe.

50mu

- › 2.0m wide x 300m rolls or 1250m rolls.
- › Weight 107g per linear metre approx.
- › 25,000 running metres minimum.
62 rolls of 400m or 16 rolls of 1500m.

100mu

- › 2.0m wide x 300m rolls or 1250m rolls.
- › Weight 215g per linear metre approx.
- › 12,500 running metres minimum.
42 rolls of 300m or 10 rolls of 1250m.

Special production widths

- › Minimum width with pockets: 1.4m
- › Maximum width with pockets: 2.7m

Gro-Net

Thermal Tex

Specialist Features:

- › **Exceptionally strong** tear-resistant 38g material.
- › **Wind-resistant structure** allowing for good airflow whilst dramatically reducing wind damage issues during difficult weather.
- › **Helping to reduce rain splash** during heavy rain fall, along with hail protection properties, compared to uncovered crops.
- › **Helping to protect** against rabbits, pigeons and other vermin.

ROLL SIZES

2.00m x 250m

4.00m x 250m

6.00m x 250m

8.00m x 250m

10.00m x 250m

12.00m x 250m

16.00m x 250m

32.00m x 250m

+ bespoke sizes



Gro-Net Insect & Bird Netting

Insect Netting	Hole size	Roll size	Pest Type
Gro-Net CC/1	1.3mm x 1.3mm	13m x 100m 13m x 200m 25m x 100m 25m x 200m	Cabbage & Carrot root fly
Gro-Net AA/6	0.8mm x 0.8mm	13m x 100m 13m x 200m 25m x 100m 25m x 200m	Cabbage & Carrot root fly Flea beetle Allium Leaf Miner Leek Moth, Aphids
Gro-Net FB/2	0.6mm x 0.6mm	13m x 100m 13m x 200m 25m x 100m 25m x 200m	Cabbage & Carrot root fly Flea beetle Allium Leaf Miner Leek Moth, Aphids, Green fly, White fly
Gro-Net FB/3L	0.6mm x 0.6mm	13m x 100m 13m x 200m 25m x 100m 25m x 200m	Cabbage & Carrot root fly Flea beetle Allium Leaf Miner Leek Moth, Aphids, Green fly, White fly
Gro-Net AWF/7	0.25mm x 0.8mm	13m x 100m 13m x 200m 25m x 100m 25m x 200m	Cabbage & Carrot root fly Flea beetle Allium Leaf Miner Leek Moth, Aphids, Green fly, White fly, Thrips
Gro-Net AWF/9	0.3mm x 0.3mm	13m x 100m 13m x 200m 25m x 100m 25m x 200m	Cabbage & Carrot root fly Flea beetle Allium Leaf Miner Leek Moth, Aphids, Green fly, White fly, Thrips
Gro-Net AH/9	3mm x 7mm	13m x 100m 13m x 200m 25m x 100m 25m x 200m	Great to protect against hail and birds

Other widths, lengths and styles of various insect netting are available on request. Manufactured to order for reasonable sized orders. Bespoke sizes on request.

Gro-Net Bird Netting

Field scale bird netting for crop protection. Lightweight yet robust, constructed from high-strength, long-life polymer, containing UV inhibitors.

Hole size:

15mm x 15mm
20mm x 20mm
25mm x 25mm

Colour:

Black or Green

Other widths, lengths and styles of various bird netting are available on request. Manufactured to order for reasonable sized orders.

Bespoke sizes also available.

Bird Netting Sizes

2.00m x 100m

4.00m x 100m

6.00m x 100m

8.00m x 100m

10.00m x 100m

12.00m x 100m

14.00m x 100m

16.00m x 100m

20.00m x 100m

Gro-Tex 105

Specialist Features:

- › **Distinctive green grid marker** to aid positioning of pots and plants.
- › **Easy installation** and maintenance.
- › **Re-usable** over many seasons.
- › **Engineered with resistance** in mind for machine and pedestrian traffic.

Gro-Tex Custom

Gromax Industries recognises growers' requirements for specific Gro-Tex applications and uses by offering a complete range of custom ground covers, including:

Gro-Tex White

The ideal choice for growers of strawberries, tomatoes, peppers and cucumbers. Gro-Tex White achieves a class-leading 90% PAR light reflect rate, designed to maximise light for the early ripening of fruit and salad crops in glasshouse and polytunnel production.

Sizes: 1.05m x 100m, 1.40m x 100m, 2.10m x 100m, 3.30m x 100m, 4.20m x 100m, 5.25m x 100m + bespoke widths and lengths available on request.

Gro-Tex Collect

Designed and produced for glasshouse and polytunnel crop transfer using a bio chopper/hopper machine. Produced with a reinforced self-edge, in weights ranging from 130g per m² to 215g per m², with warp strengths from 35k/N right up to 60k/N. Gro-Tex Collect (foliage transfer) is ultra-durable for multi-use.

Sizes: 1.10m and 1.30m x requested lengths.

Gro-Tex 'Heavy Weight'

With growers requiring longer-lasting ground covers for 'standing out areas', Gromax recognises the need by offering heavier weight, 10 year UVI wovens.

138g per m² – 212g m². Options of Gro-Tex 'Heavy Weight' are available on request.

Standard Sizes

1.05m x 50m
1.05m x 100m
1.40m x 100m
1.65m x 100m
2.10m x 50m
2.10m x 100m
3.30m x 50m*
3.30m x 100m*
4.20m x 50m*
4.20m x 100m*
5.25m x 50m*
5.25m x 100m*

*Centre folded presentation available. Bespoke sizes available on request.



Gro-Clean Strawberry Film

With added strengths and enhanced UV protection, this specialist three-season film is the choice for growers around the world.

Gro-Clean Titan

Advanced polymer technology allows for the highest strengths from thinner films, helping to reduce after crop costs.

Sizes: 1.4m x 600m and 2.1m x 700m + bespoke sizes.

Gro-Clean Glasshouse Film

Features:

- › Minimum **81% reflection**.
- › **Standard 80 Kly UV stability** (12 months in West-Europe) longer lifetime on request.
- › Deep white colouring.

Sizes:

Thickness: 50mu – 100mu

Widths: From 230cm up to 1000cm

Standard lengths: 200m and 300m.
Bespoke lengths available on request.



Gro-Therm

'Highblend' Polymer

Gro-Therm has a specialist perforated pattern for maximum strength, creating consistent growing conditions across the entire crop to ensure that all plants achieve the same fast growth rate.

Available in a variety of widths up to 14 metres, Gro-Therm is easily and quickly laid by hand or by using standard film laying machinery.

The strong material and wide anchorage borders ensure that the covers remain securely in place for as long as the plants need protection.

Perforated transparent film for noticeably better results.

Gro-Therm sizes
+ bespoke sizes available

2.10m x 700m

12.00m x 1000m



Gro-Clean Bio

Gro-Clean can dramatically reduce labour costs for weed control in the field. It creates a micro-climate that speeds up root growth to establish plants and reduces spoilage from mechanical weed control.

Sizes: 1.50m x 1000m + bespoke sizes.

Ask us about our Asparagus special – Gro-Clean Bio Film



Gro-Clean Maize

To dramatically reduce risks of early drilling, for early harvest choose Gro-Maize Bio film (Organic certified).

Exceptional film degradation at targeted date due to exclusive technology built into Gro-Maize Bio film.

SPECIFICATION

Roll size: 1.35m x 3100m with crop specific perforations

Core size: 76mm core to suit existing poly layers

Coverage: 2 rolls per hectare



Amenity Mixtures

Agrii is able to supply a wide range of amenity grass mixtures for a wide range of uses. Please get in touch for more information.

Sowing Rates & Use

Where to use each mixture...

FUNCTION	TM1 (PM5)	TM2 (PM20)	TM3 (PM36)	TM4	TM5 (PM70)	TM6 (PM79)	TM7 (PM65)	TM8	TM9 (PM60)
Bowling Green	✓								
Landscaping								✓	
Caravans								✓	
Cricket Wicket			✓						
Cricket Outfield				✓					
Croquet	✓								
Lawn Economy								✓	
Lawn Fine		✓							
Lawn Designer	✓								
Football					✓				
Gallops							✓		
Golf Fairway		✓							
Golf Green	✓								
Golf Tee		✓							
Orchard						✓		✓	
Polo							✓		
Putting Green	✓								
Rugby					✓				
Sports Renovation						✓			
Shady									✓
Tennis			✓						

TM1 (PM5) GOLF & BOWLING GREENS

- + 40% **Wagner** *Chewings fescue*
- + 40% **Smirna** *Slender creeping red fescue*
- + 20% **Highland** *Browntop bent*
- = 100%

Sowing rate: 35g/m²
Overseeding: 25g/m²
Mowing Height: Down to 5mm

TM2 (PM20) TEES & FAIRWAYS/FINE LAWN

- + 20% **Wagner** *Chewings fescue*
- + 20% **Smirna** *Slender creeping red fescue*
- + 60% **Sergei** *Strong creeping red fescue*
- = 100%

Sowing rate: 35-50g/m²
Overseeding: 15-25g/m²
Mowing Height: Down to 10mm

TM3 (PM36) CRICKET WICKET, TENNIS & TEES RENOVATION

- + 10% **Aniston** *Perennial ryegrass*
- + 20% **Chloe** *Perennial ryegrass*
- + 50% **Chardin** *Perennial ryegrass*
- + 20% **Dickens** *Perennial ryegrass*
- = 100%

Sowing rate: 35-75g/m²
Overseeding: 25-75g/m²
Mowing Height: Down to 5mm

TM4 OUTFIELDS, FAIRWAYS & QUALITY LAWNS

- + 35% **Essence** *Perennial ryegrass*
- + 35% **Maxima** *Strong creeping red fescue*
- + 25% **Wagner** *Chewings fescue*
- + 5% **Highland** *Browntop bent*
- = 100%

Sowing rate: 35-50g/m²
Overseeding: 25-50g/m²
Mowing Height: Down to 15mm

TM5 (PM70) SPORTS FIELDS, TEES, FAIRWAYS & RENOVATION

- + 10% **Tetragame** *Tetraploid ryegrass*
- + 25% **Double** *Tetraploid ryegrass*
- + 10% **Dickens** *Perennial ryegrass*
- + 25% **Esquire** *Perennial ryegrass*
- + 30% **Sergei** *Strong creeping red fescue*
- = 100%

Sowing rate: 35-50g/m²
Overseeding: 25-50g/m²
Mowing Height: Down to 12mm

TM6 (PM79) SPORTS FIELD RENOVATION

- + 50% **Double** *4Turf tetraploid perennial ryegrass*
- + 20% **Essence** *Perennial ryegrass*
- + 30% **Esquire** *Perennial ryegrass*
- = 100%

Sowing rate: 35-75g/m²
Overseeding: 25-75g/m²
Mowing Height: Down to 25mm

TM7 (PM65) RACE COURSE, GALLOPS & POLO PITCH

- + 30% **Tetragame** *Perennial ryegrass*
- + 25% **Berlioz** *Perennial ryegrass*
- + 25% **Gladys** *Perennial ryegrass*
- + 20% **Daka** *Smooth stalked meadow grass*
- = 100%

Sowing rate: 35-50g/m²
Overseeding: 25-50g/m²
Mowing Height: Down to 25mm

TM8-ECONOMY LANDSCAPE, LAWNS & PLAYING FIELDS

- + 30% **Double** *4Turf tetraploid perennial ryegrass*
- + 30% **Esquire** *Perennial ryegrass*
- + 40% **Maxima** *Strong creeping red fescue*
- = 100%

Sowing rate: 35-75g/m²
Overseeding: 25-75g/m²
Mowing Height: Down to 15mm

TM9 (PM60) SHADED CONDITIONS

- + 10% **Sabrena 1** *Rough stalked meadow grass*
- + 30% **Wagner** *Chewings fescue*
- + 20% **Samanta** *Slender creeping red fescue*
- + 40% **Sergei** *Strong creeping red fescue*
- = 100%

Sowing rate: 35-50g/m²
Overseeding: 25-50g/m²
Mowing Height: Down to 25mm

Coiled Wire

Coiled wire is a useful and cost-effective product which suits a variety of applications. Coiled wire is available in a choice of convenient specifications, both in high tensile and mild steel.

Diameter	Length	Weight	Code
2.5mm	High Tensile	650m 25kg	WIR2.5H/T
2.5mm	Mild Steel	650m 25kg	WIR2.5S/S
3.15mm	High Tensile	410m 25kg	WIR3.15H/T
3.15mm	Mild Steel	410m 25kg	WIR3.15S/S

Gripple Wire Joiners, Tensioners and Anchoring Systems

The system of choice for joining and tensioning steel wire trellis work.

Size	Specification	Code
Standard	For 2 - 3.15mm	GRIPPLES
Jumbo	Up to 5mm	GRIPPLEJ
Gripple Tensioner Tool	For tensioning	GRIPPLER
G-Pack 3	Anchoring kit	GRIPPLESL
G-Pack 4	Anchoring kit	GRIPPLEANCH
Diager Tool	For anchoring	VIC1



GPAK Metal Trellising

Code:
GRIPPLEMTIE



Tree Guards

Standard Wire 600mm x 600mm	TREEWIRE
Flexi Mesh 650mm x 110mm	TREEMESH
Flexi Mesh 550mm x 110mm	TREEMESH55



Hexagonal Wire Netting

Agrii's comprehensive range of Hexagonal wire provides a cost effective solution for a wide variety of applications, from pheasant pens to poultry runs and garden use.

Available in various heights, mesh sizes and thicknesses to suit all budgets. Agrii's hexagonal netting is heavily galvanised for maximum life and is suitable for both temporary and permanent fencing requirements.

Wire Netting (600mm x 31mm)	50m	19g	WIRE60050
Wire Netting (1200mm x 31mm)	50m	19g	WIR1200NET
Barbed Wire	200m		WIR200BARB
Rabbit Net (1050mm x 31mm)	50m	19g	RABBITNETT
C8/80/15 Field Fence	50m		FIELDFENCE

Anchor Rods

850mm x 12mm

Code:
ANCHORROD



'Traditionally Peeled', Air Dried Stakes

Any diameter can be supplied. Whilst not 100% redwood, these pressure-creosoted stakes have been used successfully in the UK and Europe for many years.

Size & Code:

2.5m No5 **STAK44**

1.8m No6 **STAK61**

3.5m No10 **STAK55**

2.5m No6 **STAK56**

Please contact Agrii to find out the other sizes available.



Spiral Tree Guards

Size & Code:

600mm 250/pack

RAI36

Posts

Size & Code:

Intermediate posts 2.5m **VINEINTERPOST2.5M**

End posts 2.75m **VINEENDPOST2.75M**



Shading/Windbreak

Made from high density polyethylene tapes and super strength monofilament to give superior performance in all climactic conditions. Tapenet is tear proof, rot proof, resistant to both the elements and pollutants and is pest and disease-free. It is equipped with secure, easy-fix eyelets for easy installation.

- + **Performance:** 50% shade and wind reduction
- + **Material:** Knitted high density polyethylene
- + **Aperture Size:** Fine mesh
- + **UV Stabilisation:** 5 years
- + **Colour:** Green

Roll Size & Code:

1.2m x 50m **ROK01.2**

1.8m x 50m **ROK01.8**



Tree Support Ties

The tree support tie is designed to support and protect the tree when grown against steel, nylon wire and non-slip cord. The tie acts as a cushion by the nature of the soft synthetic rubber material and design.

For the TST300, 400 and 600, lift upwards the hinged centre block, position the support wire underneath and into the two grooves either side. Bring the two straps round the tree and tighten each one, so the whole tie self grips.

When the tie is tightened it self grips and does not slip along the wire or cord.

The tie is soft, strong, black and UV protected.

Tree Ties

Size & Code:

8mm x 150m Green	TREET8MM
5mm x 300m Green	TREET5MM
3mm x 100mm Black	TIE3
5mm x 300mm Yellow	TIE4
8mm x 150mm Yellow	TIE5



Description	Size	Colour	Pack Size	Code
Tree Support Ties (TST300)	5cm diam x 3/4mm wire	Black	50	TREEST300
Tree Support Ties (TST400)	7.5cm diam x 3/4mm wire	Black	50	TREEST400
Tree Support Ties (TST600)	10cm diam x 6/8mm wire	Black	50	TREEST600
Tree Tie	4mm x 320m	Black	Roll	TREE4MM
Soft Tree Tie	3mm x 150m	Green	Ball	TREESOFT
Buckle Tree Ties	60cm x 22mm	Black	Single	RAI3

The Original (Model 2) with Riveted Anvil Blade

Handles have rubber shock absorber and cushion to protect the wrist. Toothed centre nut for aligning the cutting and anvil blades easily and precisely for a clean, accurate cut. Blade with wire-cutting notch, sap groove, riveted anvil blade, forged aluminium alloy handles.



Size & Code:

Length: 21.5cm Weight: 240gm **FELCO2**

Economy (Model 5) with Steel Handle

Recommended for basic garden maintenance. Pressed steel handles, tapered blade and easy cutting adjustment.



Size & Code:

Length: 22.5cm Weight: 310gm **FELCO5**

Compact (Model 6)

For the smaller hand, light and compact with tapered cutting head. Recommended for all pruning.



Size & Code:

Length: 19.5cm Weight: 210gm **FELCO6**

Professional (Model 7)

High performance model for intensive pruning with rotating handle which reduces the effort by a third. Recommended for prolonged pruning. Revolving handle spreads muscular force evenly over all fingers, preventing tendonitis and inflammation.



Size & Code:

Length: 21cm Weight: 290gm **FELCO7**

Altuna Secateurs

General purpose secateurs for the professional.

Code:

ALTSEC



Felco 600 Saw

Reliable: Rust resistant hard-chromed blade made of high-quality steel. Impulse heat treatment of the teeth. Clean, precise cut. Parts can be replaced.

Efficient: Conical blade shape that cuts without clogging. The set and shape of the teeth prevents sap build-up. Maintenance free.

Ergonomic: Comfortable non-slip handle.

Code: FELCFS

Replacement Blades: FELCFBL



ARS Saw

Reliable: Rust resistant hard-chromed blade made of high-quality steel. Impulse heat treatment of the teeth. Clean, precise cut. Parts can be replaced.

Efficient: Conical blade shape that cuts without clogging. The set and shape of the teeth prevents sap build-up. Maintenance free.

Size & Code:	Replacement Blades:
25cm BRIDG25S	25cm BRIDG25B
30cm BRIDG30S	30cm BRIDG30B



ARS Vine Snips

Code:
ARSV1



Felco 621 Saw

Replaceable rust resistant, hard chromed blade made of high quality steel. Exceptional performance conical blade cuts with ease. Complete with sheath for right or left hand use with belt loop.

Size & Code:

Blade length: 24cm

Weight: 305gm

FEL621



Replacement Blades: FEL621B

Altuna Pruning Saw

A pruning saw, complete with sheath and belt hook. Two sizes and replacement blades available.

Size & Code:

300cm **ALT300SA**

270cm **ALT270SA**

Replacement Blades:

300cm **ALT300BL**

270cm **ALT270BL**

Altuna Folding Saw

A compact folding pull saw, 180mm long and weighs 280g.

Code:

ALTFS



Aluminium Loppers (Model 210A)

Interchangeable aluminium handled loppers are extremely durable. Ergonomic and comfortable, with a soft non-slip coating on the handles. Fine blade adjustment mechanism to ensure a clean, precise cut.

Size & Code:

Maximum cutting diameter: 3.5cm

Length: 60cm

Weight: 785g

FEL21



Loppers

Long Handle

A long handle lopper weighing 1.4kg. A robust lopper with twist lock extendable aluminium handles 63cm up to 93cm.

Code:

ALTOPEX

Steel Handle

A steel handled lopper with a weight of only 1.2kg and a length of 60cm.

Code:

ALTLOPST

Lightweight

A lightweight yet extremely strong lopper making use of carbon fibre material. Weighs complete at 88g and has a length of 60cm.

Code:

ALTLOCF

Picking Buckets

These regular fruit picking buckets have been, and still are, the workhorse of the top fruit industry for over two decades.

Designed and engineered for use in demanding situations, these buckets are exceptionally functional and simple in their operations.

- + **Firm, comfortable** shoulder pads with fully adjustable buckles.
- + **Polyurethane** foam casting.
- + **Strong nylon oxford library** (also available with a soft velour finish for handling sensitive skinned fruit).
- + **Abrasion resistant PVC** wear strips.
- + **Tough, durable, polyethylene shell** protects the fruit from bruising.
- + **Simple, easy-to-use** rope and hook catch system.
- + **Long liner extension** relieves back strain when releasing fruit.

Small Bucket Size & Code:

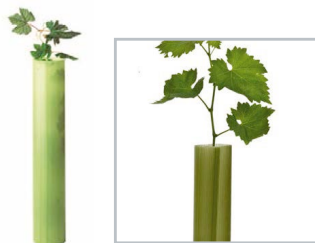
21 Litre **BUCK1**

Standard Bucket Size & Code:

28 Litre **BUCK2**

Vineguards

- + For protection from damage by vermin and herbicides.
- + Enhanced establishment.



Type, Size & Code:

Vineyard	60cm	RA123
Flexi Mesh	65cm	TREEMESH
Vine Sleeve	60cm	VIC1

Vine Clips

Various clips for securing vines to support wires and tutor.

Type, Quantity & Code:

Elbow Clip NR40	Per 1000	VICL02
Rebstar 'Big' Clip	Per 1000	VICL06
Netting Clip	Per 1000	NETCL1
Stabfix Metal Clip (for bamboo)	Per 1000	STABFIX1
Stapfix Metal Clip (for metal rods)	Per 1000	STABFIXZERO
Green Twist Ties	4", 6" & 8"	RAI28

Vine Ties.

Size, Colour & Code:

3mm x 100mm	Black	TIE3
5mm x 300mm	Yellow	TIE4
8mm x 150mm	Yellow	TIE5

Treefix

Size & Code:

6cm **TREEFIX30**



Wooden Foliage Clip

Code:

VINECLIPBIO



Tudor Rods

Code:
VINE1.2M



Nails & Chain

Type, Size & Code:

Hook Nail	5mm/2.5kg	HOOKNAIL5
Chains	200mm/7 links per 100	WINA20
Nails	1kg/c.145	WINA02



Max Tapener Machine

The tried and tested method for tying in vines.



Type, Quantity & Code:

Machine (HTR)	Single	MAXT2
Tape (Red) 16m	Box of 10	MAXT7
Tape (Green) 16m	Box of 10	MAXT13
Tape (Green) 26m	Box of 10	MAXT8
Tape (Green) 40m	Box of 10	MAXT9
Maxtape Biodegradable (Green) 40m	Box of 10	MAXTBIO
Staples (604)	Box of 2400	MAXTSTAPL

Bamboo Canes

Size, Quantity & Code:

900mm (3ft)	500/bale	CAN3/9
1200mm (4ft)	250/bale	CAN4/18
1800mm (6ft)	250/bale	CAN6/28
2400mm (8ft)	125/bale	CAN8/44
2.94m 22-24mm	50/bale	CAN30

Split Canes

Size, Quantity & Code:

12" Green	Per 1000	CANESP12
18" Green	Per 1000	CANESP18
24" Green	Per 1000	CANESP24
30" Green	Per 1000	CANESP30
36" Green	Per 1000	CANESP36

Biological Control

Thrips

There are many species of thrips found in Britain, several of which may occasionally attack crops. The most common species found on protected crops are *Thrips tabaci* (onion thrips) and more recently *Frankliniella occidentalis* (western flower thrips or W.F.T.).

Thrips feed on many types of crops causing damage to leaves and scarring to both flowers and fruit. Damage to leaves can be recognised by the appearance of white flecks with black spots (droppings) in them. If the damage is severe, leaves become totally “silvered” and many young and adult thrips can be seen underneath the leaf and in the flowers. Thrips can also transmit viruses such as tomato spotted wilt virus, which is damaging to a range of crops.

Some of the biological agents we can supply to control thrips include:

- + *Amblyseius cucumeris*
- + *Orius laevigatus*
- + *Hypoaspis miles*
- + *Steinernema feltiae*



Vine Weevil

The black vine weevil (*Otiorhynchus sulcatus*) is a pest of many crops, and is a major pest where polythene or containers are used. Adults feed at night, and are therefore rarely seen. They leave rounded notches at the edges of leaves and flowers. It is the damage done to the plant roots by larval feeding which causes crop losses. Attacked plants often show few symptoms above ground until they are severely weakened and dying.

Some of the biological agents we can supply to control vine weevil include:

- + *Steinernema kraussei*
- + *Heterorhabditis megidis*



Whitefly

The glasshouse whitefly (*Trialeurodes vaporariorum*) is a familiar pest, attacking a wide range of greenhouse crops. It feeds on the plant sap, reducing plant vigour and can multiply rapidly. It can also transmit viruses and the honeydew produced can encourage the growth of "sooty moulds", which reduce the plants photosynthetic ability and may affect the quality of fruit and flowers.

Increasing resistance of whitefly to chemical pesticides is making the use of biological control more important in the management of this pest.

Some of the biological agents we can supply to control whitefly include:

- + **Encarsia formosa**
- + **Eretmocerus**



Spider Mite

Glasshouse spider mite or two spotted mite (*Tetranychus urticae*) is one of the most damaging pests to attack horticultural crops. A wide range of crops are affected, both protected and field grown. Spider mites have a rapid reproduction and development which make resistance to chemicals more likely.

The mites feed by sucking sap from under the surface of the leaf. This produces groups of small white speckles which are clearly seen from the upper surface of the leaf. When mite numbers become high, these spots coalesce, giving a bleached appearance to the affected tissue. This can affect both plant appearance and reduce photosynthesis which may in turn result in plant death. Spider mite also produce webs and some strains have toxic saliva which can cause serious damage when only few mites are present (toxicity is most common on tomato plants).

Aphids

Aphids are small pear-shaped insects that vary in colour both within and between species. With their alarming rate of reproduction and increasing resistance to pesticides, they are becoming a much more serious threat to greenhouse crops.

All aphids feed by inserting their stylets into the conducting vessels of the plant and feeding on plant sap. There are now effective aphid predators and parasites, and growers have started to rely on these for control. The biological control agent used can depend on several factors including pest levels and aphid species.

Some of the biological agents we can supply to control aphids include:

- + **Aphidius colemani**
- + **Aphidius ervi**
- + **Aphidoletes aphidimyza**
- + **Aphelinus abdominalis**
- + **Chrysoperla carnea**



Some of the biological agents we can supply to control spider mite include:

- + **Phytoseiulus persimilis**
- + **Phytoseiulus persimilis**
- + **Feltiella acarisuga**



Pollination Agents

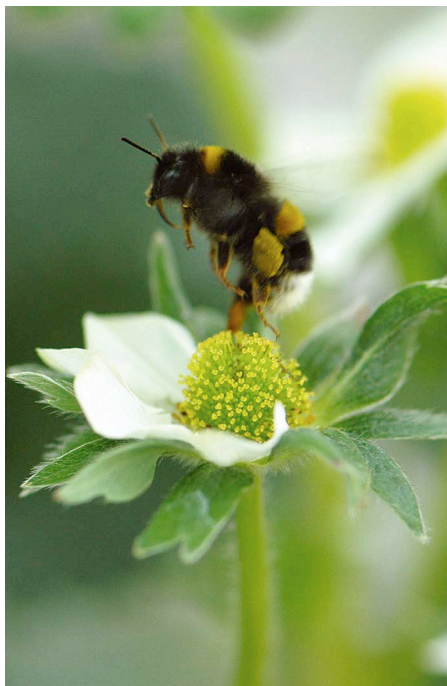
Bumblebees

Bumblebee hives have been used for pollination in a wide range of crops for over 20 years, helping UK growers achieve the highest yields of top quality fruit and vegetables. Prior to the development in the use of bumblebee hives, growers often relied on manual pollination.

More efficient than honeybees, bumblebees work at lower temperatures and lower light intensities by comparison. In this way bumblebee colonies tend to be smaller in number but more productive.

We can supply a range of bumblebee hive types to suit most crops and situations, both indoor (protected cropping) and outdoor. Bumblebees can be used effectively in strawberries, raspberries, blueberries, cane fruit, bush fruit, apples, pears, cherries, plums, apricots, top fruit, stone fruit; the list is almost endless!

Hives are rated by size of the colony and this also relates to the period in which they will remain active as well as the area they will effectively pollinate.



Bombus Terrestris Audax

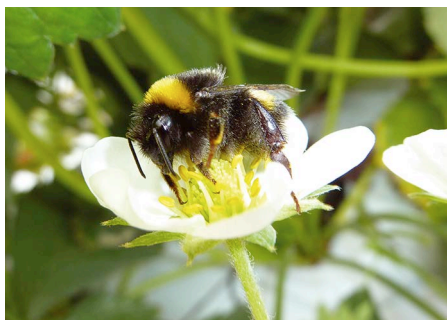
These can be used in all situations, including both protected cropping and outdoor crops such as apples, pears, blueberries and cherries, to supplement natural pollinating insects.

When using bumblebees to pollinate outdoor crops, the hives should be positioned in the middle of the orchard or plantation to avoid the bees pollinating neighbouring crops. It is also important to ensure adequate protection is given to the hives against rain and direct sun.

For specific advice and guidance on pollination and the other biological control options, contact your local Agrii agronomist.

Bombus Terrestris

Hives of this bee are only permitted for use in protected cropping situations and you may require a licence from Natural England to use this type of bee as they are not native to the UK.



Agrii stocks a full range of Cotesi, Maxicover, Farm Films, Farmer's and Tama Netwrap, Film and Twine products, including the following:

Baler Twine

Type & Code:

Fine 22300ft	TWIN09
Medium 12000ft	TWIN06
Hay 10000ft	TWIN05
Big Bale 7200ft	TWIN12
Big Bale 8600ft	TWIN10



Jute Twine

1400m

Type & Code:

2 ply Fillis Jute Twine	FILLIS2
3 ply Fillis Jute Twine	FILLIS3

Poly Twine

1kg

Code:

POLYTWIN

Tama Twine

- + Spools fit in all balers.
- + The only fully OEM validated Big Baler twine range.
- + Unrivalled consistency of fibrillation, twisting, suppleness and knotting performance.
- + Validated by leading knotter manufacturer RASSEPE.

Code:

TWIN13



Bale Netwrap

- + TamaNet™ Edge to Edge 4500m & 3600m (3600m currently comes with 200m extra free).
- + Bluebell Netwrap 3000m & 3600m.

Code:

TAMANET



Netwrap

Maxicover HT Code:

3000m 32 packs per pallet

NETWRAP

3600m 32 packs per pallet

NETWRAPS5



Silage Wrap

TPL Farm Films are tried and tested to withstand the extremes of weather conditions ranging from harsh Nordic winters to high summer temperatures of continental Europe and the wet climates of Britain and Ireland.

Unique triple layer construction, instant bond and long-term adhesion, eliminating “tailing” after wrapping and complete air-fastness for a minimum of 12 months.

Even colour dispersion without stretch marks and windowing. Unique additive package for long-term protection against film breakdown. High tack and impact strength for use on all balewrappers – round or square, static or trailed, semi or fully auto.

Farm Film Physical Properties

Width:	500mm, 750mm
Length per roll:	1,800m, 1,500m
Reel weight:	22kg, 27.5kg
Reels per pallet:	48 reels, 40 reels
Thickness:	25mu

Special Properties

Unique antioxidant/UV Stabilisers for Northern Europe, Southern Europe and Deep Sea.

Environmental

All TPL Farm Films are recyclable, in accordance with the latest environmental guidelines. Used film is suitable for plastics recycling or it may be burned in a special incinerator without producing hazardous by-products.



Farmfilm Silage Wrap

- + UV Stabilised.
- + 5 layer silage wrap.
- + Consistent quality from Farmer's.
- + High tack levels ensures a perfect seal.

Type & Code:

Black 750mm	SILAFLEX7
Black 500mm	SILAFLEX
Green 750mm	POLY17
Green 500mm	POLY16

Agrii RHIZA Connect App and Dashboard

The Agrii RHIZA Connect App and Dashboard provide a highly localised weather service, available to both Agrii agronomists and customers. Using Agrii's network of Adcon weather stations, the RHIZA Connect App and Dashboard collect and model the extensive weather data, allowing Agrii agronomists and customers to accurately predict and monitor pest and disease pressure – helping to support decision making on farm.

Each weather station captures extensive data which is used to calculate pest and disease forecasts.

Main features of the RHIZA Connect App and Dashboard:

- + Weather forecasting (two day and eight day).
- + 12 months weather history as well as 8 days of historical weather data.
- + Spraying forecast.

RHIZA



Types of data collected:

- + Average daily temperatures.
- + Max and min temperatures.
- + Rainfall.
- + Solar radiation.
- + Relative humidity.
- + Wind direction and wind speed.
- + Leaf wetness.
- + Evapotranspiration.

Key grower benefits:

- + Accurate two day and eight day weather forecasts.
- + Highly localised historical weather data.
- + Decision tools for crop spraying.

The RHIZA Connect App and Dashboard can assist the Agrii agronomist and make the best appropriate products and timing of future crop protection measures. Agrii has over 200 weather stations in the UK. A higher number of weather stations allows for more accurate, local data to be collected – the result is more reliable and valuable pest and disease forecasting.

For more information or to get access to the RHIZA Connect App and/or Dashboard, please contact RHIZA Weather on 03300 949150 or email rhizaweather@agrii.co.uk.

Soil Moisture Monitoring

RHIZA soil moisture sensors

- + Provide multi-depth soil moisture information, which can be linked to Soil Management Zones.
- + Enable more efficient use of water and help optimise the yield and quality of your crops.
- + Link to a local Agrii weather station or feature additional in-crop sensors for improved decision support e.g. pest and disease forecasts, and nutrient management.



Agrii Weather Stations

Agrii Weather Stations include all the sensors required to compute the most common disease models. For a full list of available sensors, visit www.agrii.co.uk/products-services/agrii-weather-stations



SEN-R Combi-sensor

Extremely accurate and robust combi-sensor for air temperature and humidity.



Rain Gauge RG1 200mm

Designed as a universal rain gauge that meets the needs of most applications and locations.



GPRS Telemetry Unit

Various GPRS data loggers are available to wirelessly transmit the weather station data depending on the location and requirements.



Wind Sensors

Wind sensors recording both wind speed and wind direction.



Soil Temperature Probe

A probe specifically developed for measuring soil temperature at variable depths.



Pyranometer

A sensor used for recording solar radiation levels.



Leaf Wetness Sensor

An electronic leaf sensor to simulate moisture levels on leaves.



Soil Moisture Sensor

Designed to measure soil moisture and temperature in all kinds of soils at a wide range of depths.



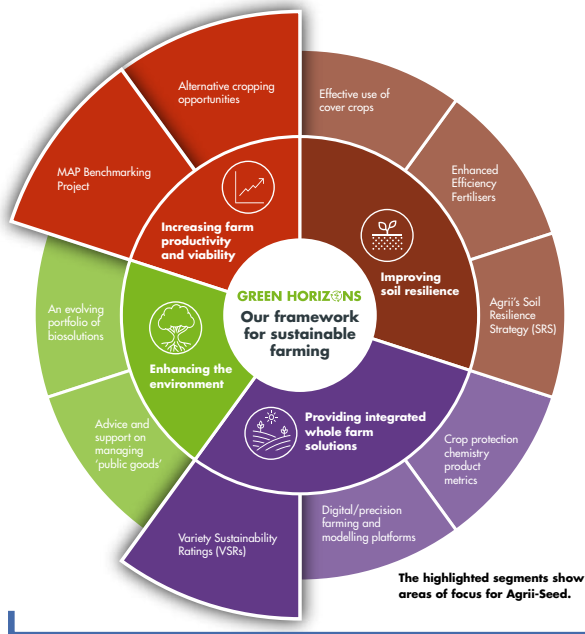
Solar Panel

Provides a power supply to the GPRS transmitter enabling remote installation in most locations.

To find out more about our weather station network and decision support services, please contact RHIZA Weather on 03300 949150 or email rhizaweather@agrii.co.uk.

GREEN HORIZONS

Supporting the adoption of more sustainable farming practices



Extending stakeholder engagement:
To continue collaborating with industry experts to ensure the supply chain is joined up in its approach



"Growing food is our mission, and doing that productively and sympathetically is what we mean by sustainable farming. Agriculture has the unique capacity to provide solutions to the challenge of producing healthy, nutritious food while mitigating climate change and protecting biodiversity. Through our Green Horizons initiative, we strive to dovetail that approach with the right agronomic advice to put our growers ahead in this rapidly evolving environment."

Amy Watkins | Agrii Sustainability Manager

Read more about sustainable farming approaches in our **Green Horizons Insight Reports:**

Download your copies by using the QR code.




Two-year study supports increased role for biological fungicides

1. The number of synthetic fungicides needed to control powdery mildew in a strawberry trial was reduced by 58% while crop quality improved through reduced plant stress.
2. A two-year trial performed by crop advisers and trials specialists Agrii, has demonstrated the potential contribution biological fungicides can make to controlling powdery mildew (*Podosphaera aphanis*) in commercial strawberry production.
3. The trial, which was jointly supported by manufacturers Bayer Crop Science and Certis Belchim, incorporated commercially available biological fungicides into a programme for comparison with one based entirely on conventional products. Until now, biological fungicides have only been assessed in isolation.
4. "The integrated programme performed impressively well", explains Emily Dimond, Agrii fruit agronomist who managed the trial.
5. "In both 2021 and 2022, strawberries produced under the integrated programme were bigger and heavier than those receiving only synthetic fungicides. There were no negative effects on firmness or Brix scores either," Miss Dimond said.
6. The trial used the variety Malling Centenary, with crops planted in March and grown on tabletops in a Spanish tunnel with fertigation system to replicate commercial practice. Fungicides were applied every seven days, as per standard commercial practice. Seasonal differences meant that a total of 14 fungicides were needed to control powdery mildew in 2021, while only 12 were required in 2022. In both years, conventional products accounted for five applications.
7. The trial proved that it is possible to meet yield and quality targets with the structured use of biologicals, however, this was not the only finding.
8. "Over two years, the average size and weight of the strawberries was greater for the integrated programme at 7% and 14% respectively. This is likely to be a benefit of less crop stress compared with the conventional programme," Miss Dimond said.
9. Shelf-life assessments based on storage for seven days at ambient temperatures considered the incidence of storage rots, such as *Botrytis*, *Penicillium* and *Cladospodium*. In both years, the incidence of storage rots reflected the disease pressure during the season, but in all instances the amount of healthy fruit was significantly greater in the integrated programme.
10. "It is fully understood, but the shelf-life potential of the crops grown under the integrated programme was significantly greater. This will likely be due to a combination of factors, not least the negative effects of crop stress and the possibility that harvest has been delayed past the optimum point", Miss Dimond said.
11. "The reduced re-entry period associated with biologicals will be of considerable value to growers as will the reduced harvest interval on just one day rather than the standard three. This means crops can be picked at the optimum time which will support crop quality," Miss Dimond added.
12. Although not something the trial sought to consider, there was a noticeable difference in fruit appearance between the programmes. That produced under the integrated programme was of a medium red colour with fewer observable seeds while the conventional programme tended to result in fruit that was darker in appearance with evidently more seeds.
13. The trial will continue for a further year to generate further data and refine the programme before being shared with growers and buyers.



For further information or to order, please speak to your usual Agrii contact or get in touch with our Customer Service Team:

 0845 607 3322

 horticultureorders@agrii.co.uk

 www.agrii.co.uk/products-services/ancillary-products



Printed using vegetable inks on paper made from FSC® certified and traceable pulp sources. Manufactured in accordance with ISO certified standards for environmental, quality and energy management. A Carbon Balanced product with World Land Trust certificates.

Agrii[™]

www.agrii.co.uk